

**POPULATION TRENDS OF EUROPEAN COMMON BIRDS  
2003**



**Pan-European Common Bird Monitoring**

Population trends and indices of selected 48 common bird species in Europe, which have been produced by Pan-European Common Bird Monitoring Scheme, are presented for each species.

### **Acknowledgements**

Producing European indices and indicators would not have been possible without the efforts of the many ornithologists across Europe who kindly cooperated in the project, provided us with national indices or helped us in other ways to get the data. All contributors are listed below, and we are very grateful to all of them.

Austria - Norbert Teufelbauer, Michael Dvorak;  
Belgium - Christian Vansteenwegen, Anne Weiserbs, Jean-Paul Jacob, Anny Anselin;  
Czech Republic - Karel Šťastný, Vladimír Bejček;  
Denmark - Michael Grell, Erik Mandrup Jacobsen, Henning Heldbjerg;  
Estonia - Andres Kuresoo;  
France - Frederic Jiguet;  
Germany - Martin Flade, Johannes Schwarz;  
Hungary - Tibor Szep;  
Ireland - Olivia Crowe;  
Italy - Lorenzo Fornasari;  
Latvia - Ainars Aunins;  
Norway - Magne Husby;  
Poland - Przemek Chylarecki;  
Spain - Juan Carlos del Moral, Ramón Martí;  
Sweden - Ake Lindström;  
Switzerland - Hans Schmid;  
UK – David Noble.

Data analysis has been done in close cooperation and with help of Arco Van Strien and Adriaan Gmelig Meyling at Statistics Netherlands. Richard Gregory (RSPB), David Noble (BTO) and Ruud Foppen (SOVON) contributed also by many valuable suggestions and comments. We also thank all those who have supported the Pan-European Common Bird Monitoring scheme, we are grateful to Nicola Crockford (RSPB), Norbert Schaffer (RSPB), Ward Hagemeyer (Wetlands International), Dominique Richard, Grégoire Lois, Vibeke Horlyck and the European Topic Centre on Nature Protection & Biodiversity/European Environment Agency for comment and support.

Pan-European Common Bird Monitoring Project is a joint project of BirdLife International and the European Bird Census Council, funded by the Royal Society for the Protection of Birds.

The project would not have been possible without the fieldwork of thousands of volunteer ornithologists across Europe.

This report has been compiled by Petr Vorisek, coordinator of the Pan-European Common Bird Monitoring Scheme, contact address: Czech Society for Ornithology, V Olšínách 449/41, CZ-100 00 Prague 10, Czech Republic, e-mail

[EuroMonitoring@birdlife.cz](mailto:EuroMonitoring@birdlife.cz).

Front page photo: Jan Ševčík.

## Methods

Population trend information for 48 selected terrestrial breeding birds came from annually operated surveys spanning different periods of operation from 18 European countries through the Pan-European Common Bird Monitoring scheme. The computer package TRIM (<http://zeus.nyf.hu/~szept/trim.htm>), which allows for missing counts by estimation and yields yearly indices and standard errors using Poisson regression, was used to calculate national species' indices. In a second run of TRIM, we grouped countries that were similar in character and close in proximity (north, south, east & west) so that missing values for species could be estimated from similar neighbouring countries. We then used TRIM to combine the national indices into supranational indices for species, weighted by estimates of national population sizes (BirdLife International/European bird Census Council 2000; Pannekoek, & van Strien 2001; van Strien et al. 2001). Weighting allows for the fact that different countries hold different proportions of the species' European population (van Strien et al. 2001). This means a change in a larger population has greater impact on the overall trend than a change in a smaller national population. Supranational indices for species were then combined (on a geometric scale) to create multi-species indicators (Gregory et al. 2003). Although national schemes differ in count methods in the field and in other respects, these differences should not influence the supranational results because the standardised indices from TRIM were combined. We cannot, however, exclude the possibility that bias within national schemes, for example, due to representation and sampling strategy, or operation of field methods, might introduce bias into the European trends, although we would argue that this would result in little directional bias.

Countries contributing trend information were: Austria, Belgium, Denmark, France, Federal Republic of Germany, Ireland, Italy, The Netherlands, Spain, Sweden, and United Kingdom (European Union countries); Estonia, Latvia, Poland, Czech Republic, and Hungary (countries acceded to the EU in 2004); plus Norway and Switzerland.

Expert ornithologists (Vorisek 2002) selected 24-bird species characteristic of either woodland, parks and gardens or agricultural habitats in Europe. The birds selected had large European ranges, were abundant enough to be monitored accurately in the majority of countries by common bird monitoring schemes, were well monitored by standard field methods, and were considered to some degree dependent on the habitat for nesting or feeding.

Agricultural species selected were: *Alauda arvensis*, *Athene noctua*, ***Carduelis cannabina***, ***Carduelis carduelis***, *Carduelis chloris*, *Columba palumbus*, *Corvus corone*, *Corvus monedula*, *Coturnix coturnix*, ***Emberiza citrinella***, *Emberiza schoeniclus*, *Falco subbuteo*, *Falco tinnunculus*, *Hirundo rustica*, ***Lanius collurio***, ***Miliaria calandra***, *Motacilla flava*, *Passer montanus*, *Pica pica*, ***Saxicola rubetra***, ***Streptopelia turtur***, ***Sturnus vulgaris***, ***Sylvia communis***, *Vanellus vanellus*. The woodland, park and garden species selected were: *Accipiter nisus*, ***Aegithalos caudatus***, ***Anthus trivialis***, *Buteo buteo*, *Dendrocopos major*, *Erithacus rubecula*, *Fringilla coelebs*, ***Garrulus glandarius***, *Jynx torquilla*, ***Muscicapa striata***, ***Parus ater***, *Parus caeruleus*, *Parus major*, ***Phoenicurus phoenicurus***, ***Phylloscopus collybita***, *Phylloscopus trochilus*, ***Prunella modularis***, ***Regulus regulus***, ***Sylvia atricapilla***, *Sylvia borin*, ***Troglodytes troglodytes***, *Turdus merula*, ***Turdus philomelos***, ***Turdus viscivorus***. Species in bold type were classified as specialists of farmland or woodland according to the following sources of information on species' habitat requirements: the European breeding Atlas (Hagemeijer & Blair 1997) and publication by Tucker & Heath (1994). Furthermore, national monitoring coordinators provided us with their own assessment – proportion of a species' national population breeding in a given habitat type in four categories (less than 25%, 25 to 50%, 50 to 75%, more than 75%).

## Results

Multi-species indicators were produced and report can be downloaded at <http://www.rspb.org.uk/international/policy/indicators.asp>. On average, populations of common generalist birds in Europe have remained stable over the last twenty years, although numbers have fluctuated in response to winter conditions (trend 1980-2002 = -2%). Common specialist birds of forest have declined to a small degree (trend 1980-2002 = -7%). Populations of common specialist birds of farmland, in contrast, have declined sharply, especially in the 1980s, and the downward trend continues at a slower rate (trend 1980-2002 = -42%). This reflects deterioration in the quality of farmland habitats, affecting both birds and other elements of biodiversity. There is abundant evidence that declines among farmland birds in Europe have been driven by agricultural intensification.

## Trends of species

Farmland species						
	Europe		Old EU member states		New EU member states	
	Trend (1966- 2002) with standard error	Change 1980- 2002 (%)	Trend (1980- 2002) with standard error	Change 1982- 2002 (%)	Trend (1980- 2002) with standard error	Change 1982- 2002 (%)
<i>Falco tinnunculus</i> Common Kestrel	0.99 0.0035	-14.7	0.99 0.0018	-12.9	0.99 0.0041	-16.1
<i>Falco subbuteo</i> Hobby	0.97 0.0323		1.72 8.4408			
<i>Coturnix coturnix</i> Quail	1.15 0.0484		1.34 0.2213	5800.0	1.29 0.0155	4571.6
<i>Vanellus vanellus</i> Northern Lapwing	0.97 0.0036	-63.5	0.95 0.0036	-88.0	0.9 0.0025	-84.7
<i>Columba palumbus</i> Common Wood- pigeon	1.02 0.0039	75.4	1.01 0.0017	64.9	1.01 0.0025	34.1
<i>Streptopelia turtur</i> European Turtle-dove	0.96 0.0028	-60.6	0.95 0.003	-57.5	0.98 0.0018	-28.7
<i>Athene noctua</i> Little Owl	0.98 0.0067	-58.1	0.97 0.0307	-38.2		
<i>Alauda arvensis</i> Eurasian Skylark	0.97 0.0013	-39.7	0.98 0.0014	-29.9	0.99 0.0013	-20.2
<i>Hirundo rustica</i> Barn Swallow	0.99 0.0024	-24.5	0.99 0.002	-12.6	1 0.0046	2.6
<i>Motacilla flava</i> Yellow Wagtail	0.98 0.01	-34.1	0.97 0.0054	-48.1	0.98 0.0023	-20.6
<i>Saxicola rubetra</i> Whinchat	0.99 0.0047	-14.6	0.98 0.0048	-25.0	1.02 0.003	60.0
<i>Sylvia communis</i> Common Whitethroat	0.98 0.0019	25.0	1.01 0.0024	26.1	1 0.0021	4.9
<i>Lanius collurio</i> Red-backed Shrike	0.99 0.0055	57.1	1.06 0.0121	175.6	1.04 0.0038	56.1
<i>Pica pica</i> Black-billed Magpie	1.02 0.0015	22.1	0.99 0.0028	12.7	1.01 0.003	40.0
<i>Corvus monedula</i> Eurasian Jackdaw	1.01 0.0033	12.8	1 0.0034	-7.0	0.94 0.005	-75.0
<i>Corvus corone</i> Carrion Crow	1.01 0.0014	19.4	1 0.0023	14.4	0.98 0.0041	-29.3
<i>Sturnus vulgaris</i> Common Starling	0.96 0.0018	-48.7	0.96 0.0022	-46.4	1.01 0.0029	57.8
<i>Passer montanus</i> Eurasian Tree Sparrow	0.91 0.0036	-82.1	0.93 0.0087	-72.5	0.99 0.0054	-9.7
<i>Carduelis chloris</i> European Greenfinch	0.99 0.0016	15.7	1 0.0033	10.8	0.95 0.003	-56.5
<i>Carduelis carduelis</i> European Goldfinch	0.99 0.0024	5.3	1.02 0.0032	91.6	1.04 0.0037	60.9
<i>Carduelis cannabina</i> Eurasian Linnet	0.96 0.0019	-52.1	0.97 0.0021	-34.0	0.98 0.003	-31.0
<i>Emberiza citrinella</i> Yellowhammer	0.98 0.0013	-39.3	0.96 0.0021	-43.3	0.99 0.0017	-8.3
<i>Emberiza schoeniclus</i> Reed Bunting	0.98 0.0019	-20.0	0.99 0.0017	-12.5	1.01 0.0036	21.4
<i>Miliaria calandra</i> Corn Bunting	0.94 0.0085	-66.2	0.94 0.0078	-69.9	0.99 0.0028	-29.2

### Woodland, park and garden species

	Europe		Old EU member states		New EU member states	
	Trend (1966-2002) with standard error	Change 1980-2002 (%)	Trend (1980-2002) with standard error	Change 1982-2002 (%)	Trend (1980-2002) with standard error	Change 1982-2002 (%)
<i>Accipiter nisus</i> Eurasian Sparrowhawk	1.03 0.0084	153.8	1.01 0.0066	177.5	0.96 0.0055	-12.2
<i>Buteo buteo</i> Common Buzzard	1.04 0.0072	81.0	1.03 0.0053	58.9	0.99 0.0048	-7.4
<i>Jynx torquilla</i> Eurasian Wryneck	0.96 0.0062	-59.5	1.03 0.0198	48.8	0.97 0.0052	-41.0
<i>Dendrocopos major</i> Great Spotted Woodpecker	1.02 0.0027	3.3	1 0.0018	19.3	1.02 0.0024	37.5
<i>Anthus trivialis</i> Tree Pipit	0.97 0.0027	-44.5	0.96 0.0024	-47.4	0.99 0.0032	7.6
<i>Troglodytes troglodytes</i> Winter Wren	1.01 0.0009	51.4	1.02 0.0014	89.3	1.03 0.0029	49.3
<i>Prunella modularis</i> Hedge Accentor	0.97 0.001	-37.3	0.98 0.002	-25.2	1 0.0029	-20.5
<i>Erithacus rubecula</i> European Robin	1 0.0008	10.4	1.01 0.0022	26.4	1 0.0031	-18.6
<i>Phoenicurus phoenicurus</i> Common Redstart	0.99 0.0039	-14.4	0.99 0.0041	-11.7	1.04 0.0096	147.1
<i>Turdus merula</i> Eurasian Blackbird	0.99 0.0007	0.9	1 0.0012	6.1	1.02 0.0018	45.2
<i>Turdus philomelos</i> Song Thrush	0.97 0.001	-10.8	0.99 0.0014	3.5	0.99 0.0033	-11.2
<i>Turdus viscivorus</i> Mistle Thrush	0.98 0.0018	-6.4	0.99 0.0026	13.9	1.03 0.0052	138.7
<i>Sylvia borin</i> Garden Warbler	1 0.0025	-8.0	0.99 0.0018	-9.1	1 0.0044	-1.2
<i>Sylvia atricapilla</i> Blackcap	1.02 0.0015	85.3	1.02 0.0017	63.4	1.06 0.0049	233.3
<i>Phylloscopus collybita</i> Common Chiffchaff	1 0.0018	38.8	1.03 0.0024	57.7	1.02 0.0047	77.4
<i>Phylloscopus trochilus</i> Willow Warbler	0.98 0.001	-28.8	0.97 0.0019	-41.7	0.99 0.0025	-18.3
<i>Regulus regulus</i> Goldcrest	0.99 0.0024	-28.0	0.99 0.0026	-30.9	1 0.0032	-26.7
<i>Muscicapa striata</i> Spotted Flycatcher	0.96 0.0028	-56.6	0.96 0.0045	-60.4	1.06 0.0099	100.0
<i>Aegithalos caudatus</i> Long-tailed Tit	1 0.0027	41.7	1.01 0.0052	25.0	0.93 0.0034	-48.2
<i>Parus ater</i> Coal Tit	1 0.002	-7.9	0.99 0.002	-9.3	1 0.0016	1.8
<i>Parus caeruleus</i> Blue Tit	1 0.0008	13.0	1 0.0009	23.8	1 0.0022	6.1
<i>Parus major</i> Great Tit	1 0.0009	4.0	0.99 0.0013	0.0	0.98 0.0016	-12.2
<i>Garrulus glandarius</i> Eurasian Jay	0.99 0.002	1.9	0.99 0.0017	-4.6	1 0.0033	38.2
<i>Fringilla coelebs</i> Chaffinch	1 0.0008	-2.0	0.99 0.0007	0.0	0.99 0.0016	-10.1

***Explanatory notes to the table:***

Europe – all 18 countries which provided the data.

Old EU member states – Austria, Belgium, Denmark, France, Federal Republic of Germany, Ireland, Italy, The Netherlands, Spain, Sweden, and United Kingdom.

New EU member states - Estonia, Latvia, Poland, Czech Republic, and Hungary.

Trend – multiplicative trend over the time period given in parentheses.

% change – percentage change in the index over the period given.

Since first year of data available within New EU member states is 1982, for better comparison change in the index is given for the same time period in Old EU member states too.

Trends were not available for some species and particular period because of sparse data, see individual species.

**References**

BirdLife International/European bird Census Council. 2000. European bird populations: estimates and trends. Cambridge, UK, BirdLife Conservation Series No. 10.

Gregory, R.D., Noble, D., Field, R., Marchant, J.H, Raven, M. & Gibbons D.W. 2003. Using birds as indicators of biodiversity. *Ornis Hungaria* 12-13, (in press).

Hagemeijer, E.J.M. & Blair, M.J. (eds) 1997. The EBCC Atlas of European breeding birds: their distribution and abundance. Poyser, London.

Pannekoek, J. & van Strien, A.J. 2001. TRIM 3 Manual. TRends and Indices for Monitoring Data. Research paper no. 0102. Statistics Netherlands, Voorburg, The Netherlands.

Tucker, G.M. & Heath, M.H. 1994. *Birds in Europe: their conservation status*. Cambridge, U.K: BirdLife International.

van Strien, A. J., Pannekoek, J., & Gibbons, D. W. 2001. Indexing European bird population trends using results of national monitoring schemes: a trial of a new method. *Bird Study* 48, 200-213.

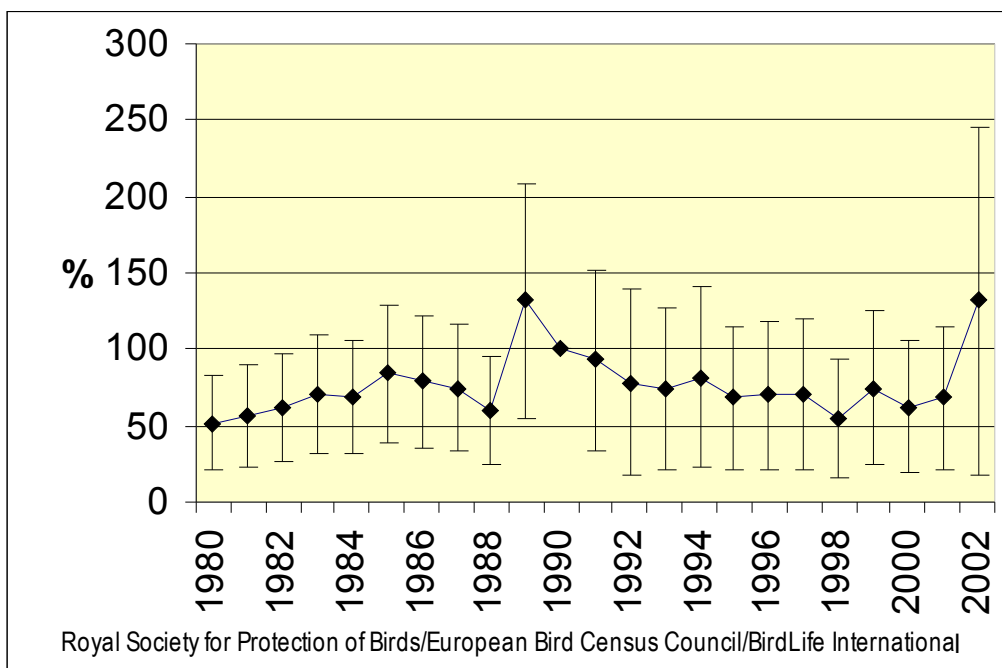
Vorisek, P. (ed) (2002). Pan-European Common Bird Monitoring Project workshop. Prague 16-19 September 2002. CD-ROM, Czech Society for Ornithology, Czech Republic.

*Accipiter nisus*  
Eurasian Sparrowhawk

**Trend in Europe (1966-2002) (SE): 1.03 (0.0084)**

**Change 1980-2002 (%): +153.8**

*Indices (+/- 1.96 SE), 1980 – 2002, Europe. The index for the base year (1990) is 100 %.*



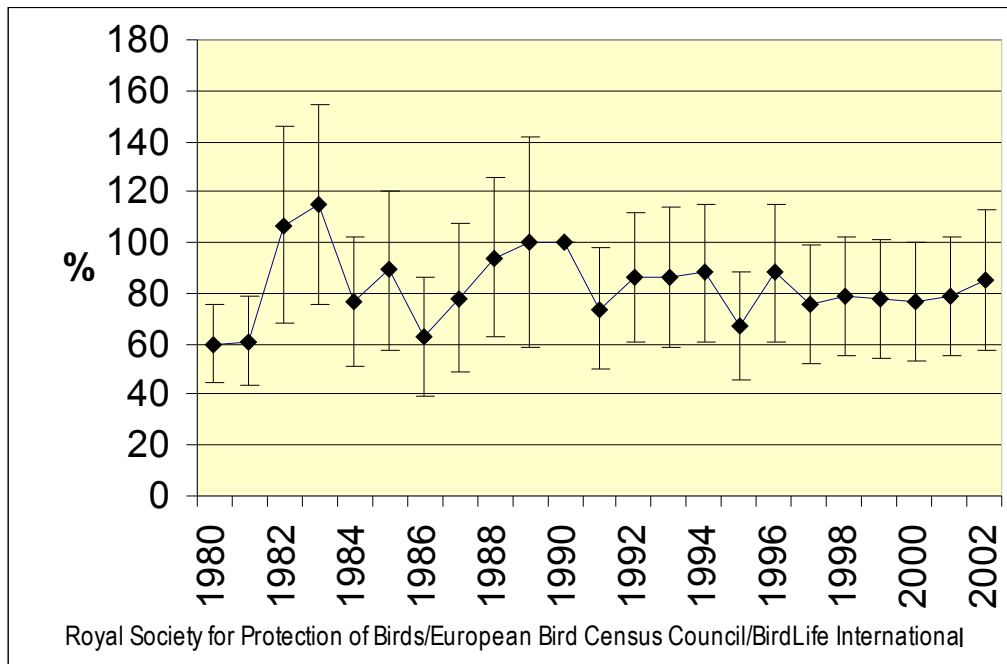


*Aegithalos caudatus*  
Long-tailed Tit

Trend in Europe (1966-2002) (SE): 1 (0.0027)

Change 1980-2002 (%): +41.7

*Indices (+/- 1.96 SE), 1980 – 2002, Europe. The index for the base year (1990) is 100 %.*

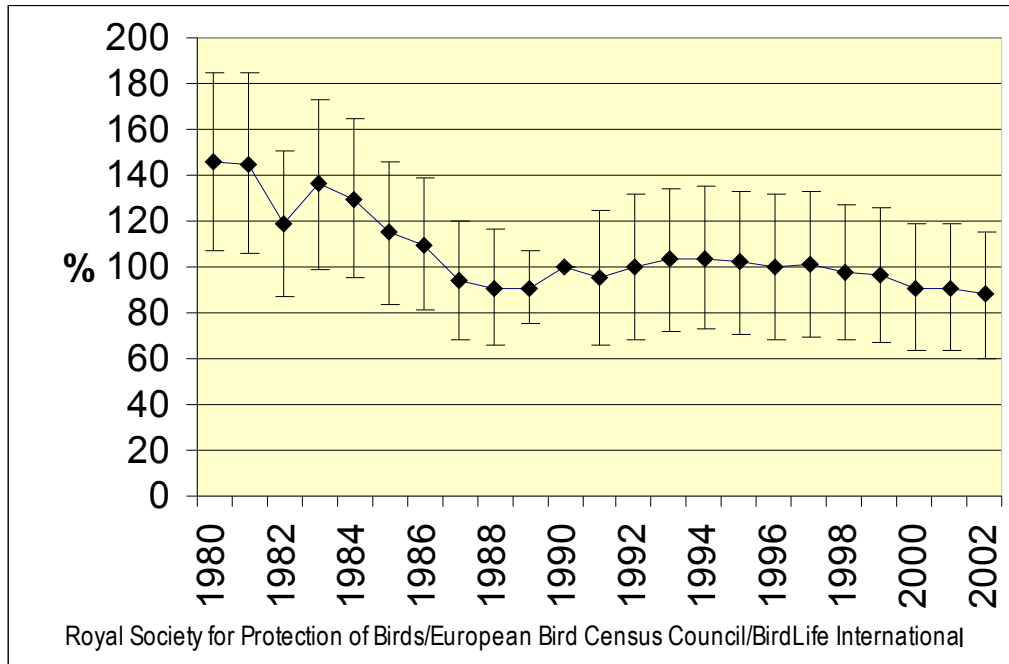


*Alauda arvensis*  
Eurasian Skylark

Trend in Europe (1966-2002) (SE): 0.97 (0.0013)

Change 1980-2002 (%): -39.7

Indices (+/- 1.96 SE), 1980 – 2002, Europe. The index for the base year (1990) is 100 %.

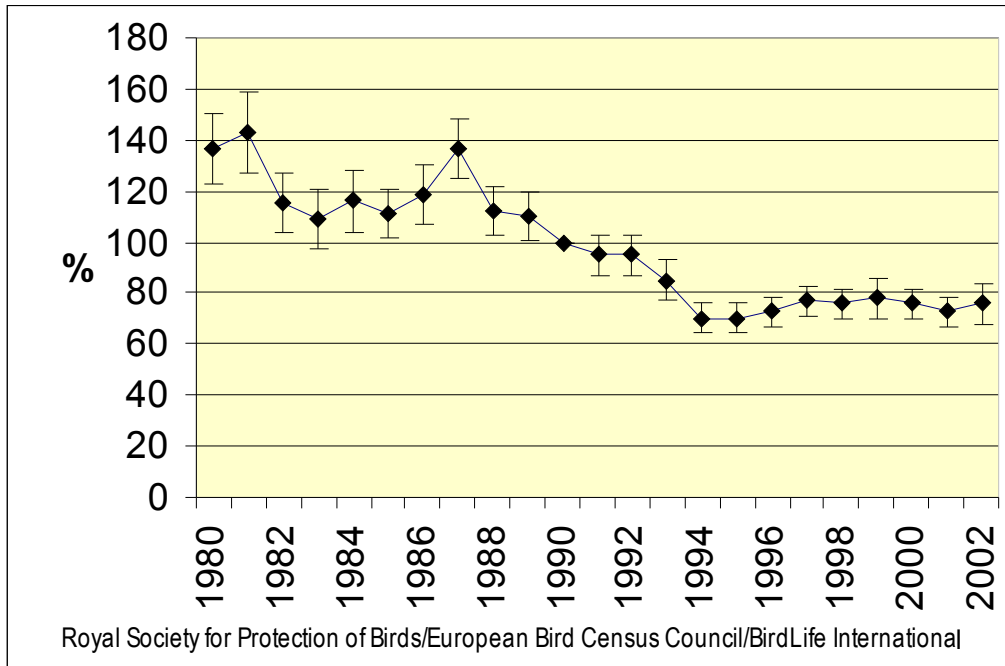


*Anthus trivialis*  
Tree Pipit

Trend in Europe (1966-2002) (SE): 0.97 (0.0027)

Change 1980-2002 (%): -44.5

*Indices (+/- 1.96 SE), 1980 – 2002, Europe. The index for the base year (1990) is 100 %.*

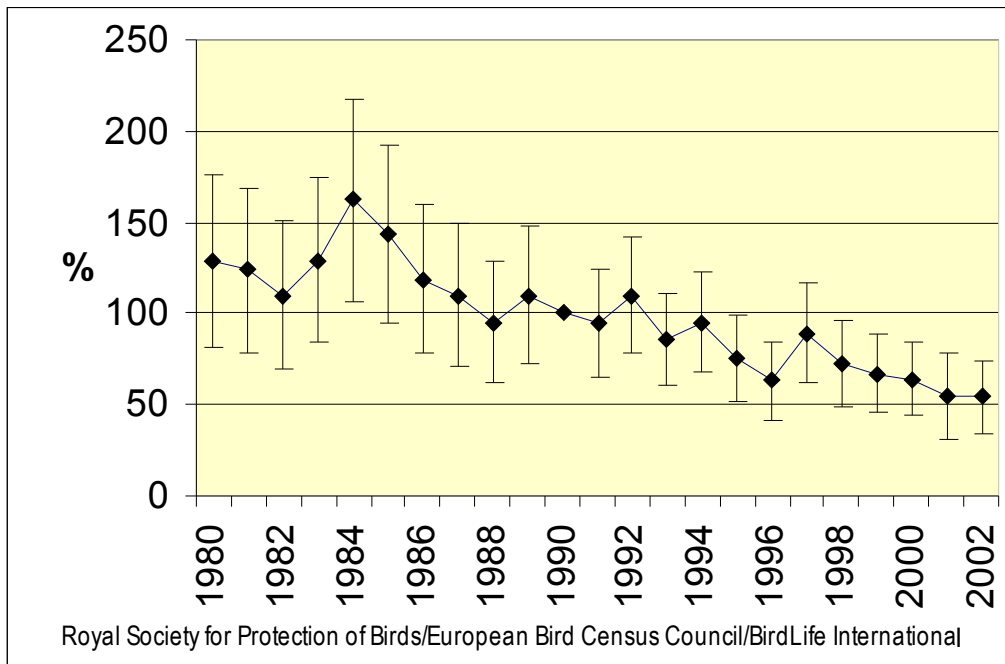


*Athene noctua*  
Little Owl

Trend in Europe (1966-2002) (SE): 0.98 (0.0067)

Change 1980-2002 (%): -58.1

*Indices (+/- 1.96 SE), 1980 – 2002, Europe. The index for the base year (1990) is 100 %.*

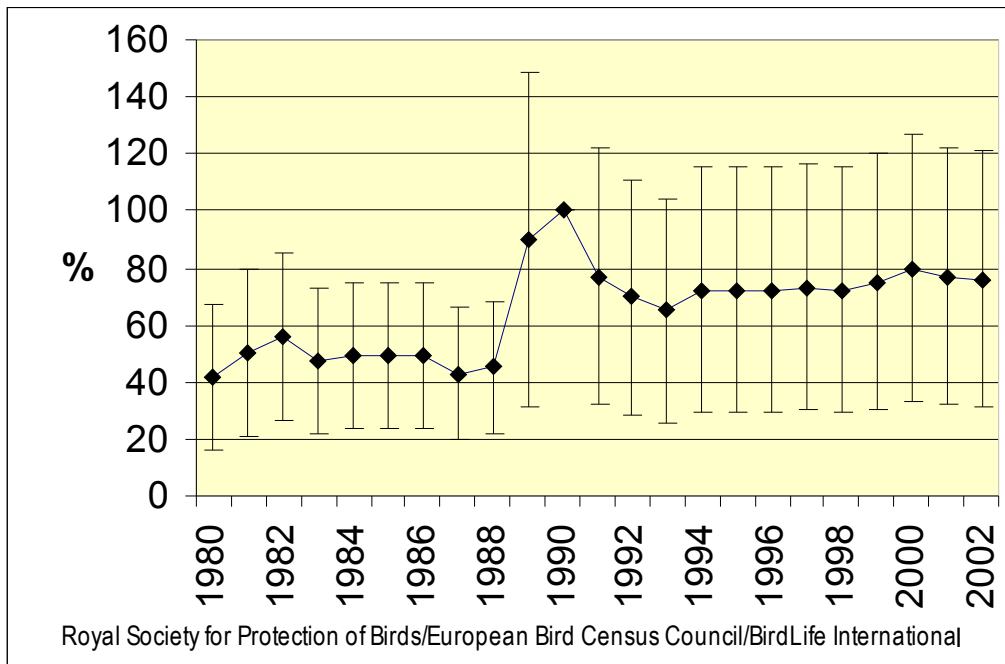


*Buteo buteo*  
Common Buzzard

Trend in Europe (1966-2002) (SE): 1.04 (0.0072)

Change 1980-2002 (%): +81

*Indices (+/- 1.96 SE), 1980 – 2002, Europe. The index for the base year (1990) is 100 %.*

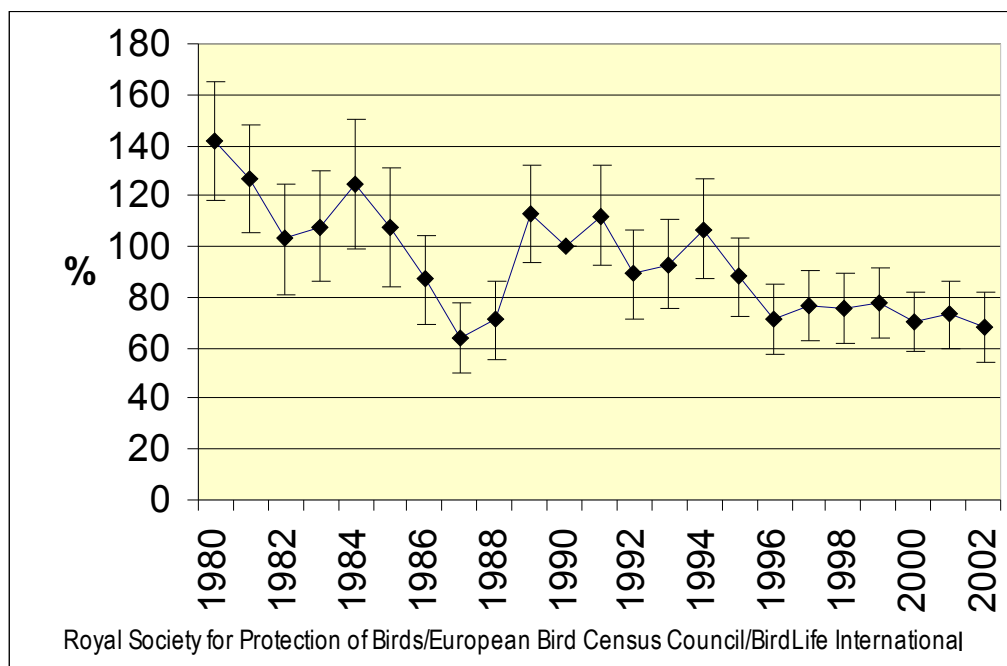


*Carduelis cannabina*  
Eurasian Linnet

Trend in Europe (1966-2002) (SE): 0.96 (0.0019)

Change 1980-2002 (%): -52.1

*Indices (+/- 1.96 SE), 1980 – 2002, Europe. The index for the base year (1990) is 100 %.*

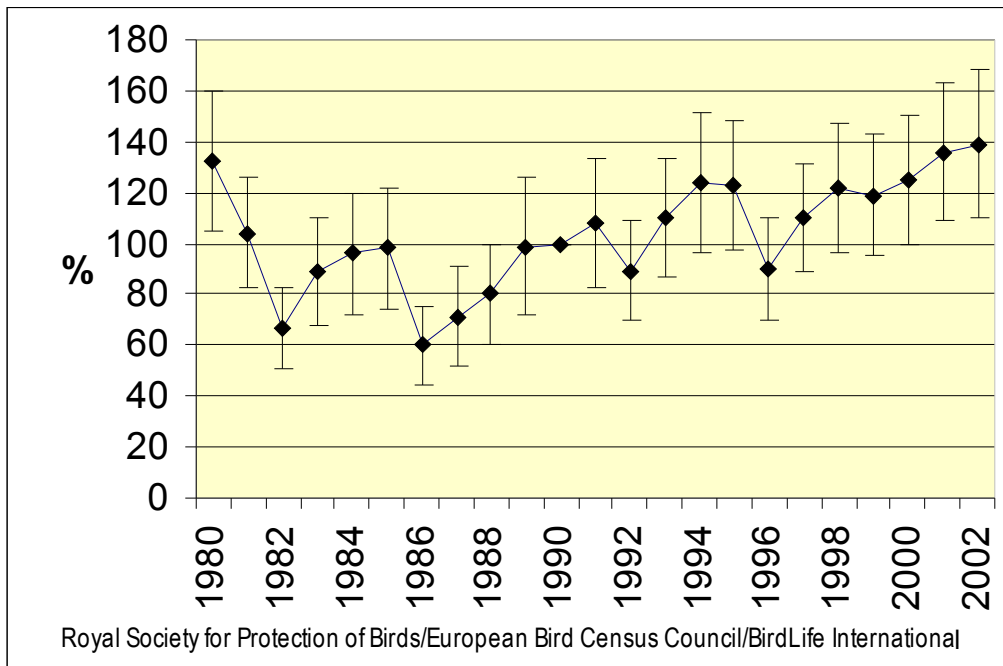


*Carduelis carduelis*  
European Goldfinch

Trend in Europe (1966-2002) (SE): 0.99 (0.0024)

Change 1980-2002 (%): +5,3

*Indices (+/- 1.96 SE), 1980 – 2002, Europe. The index for the base year (1990) is 100 %.*

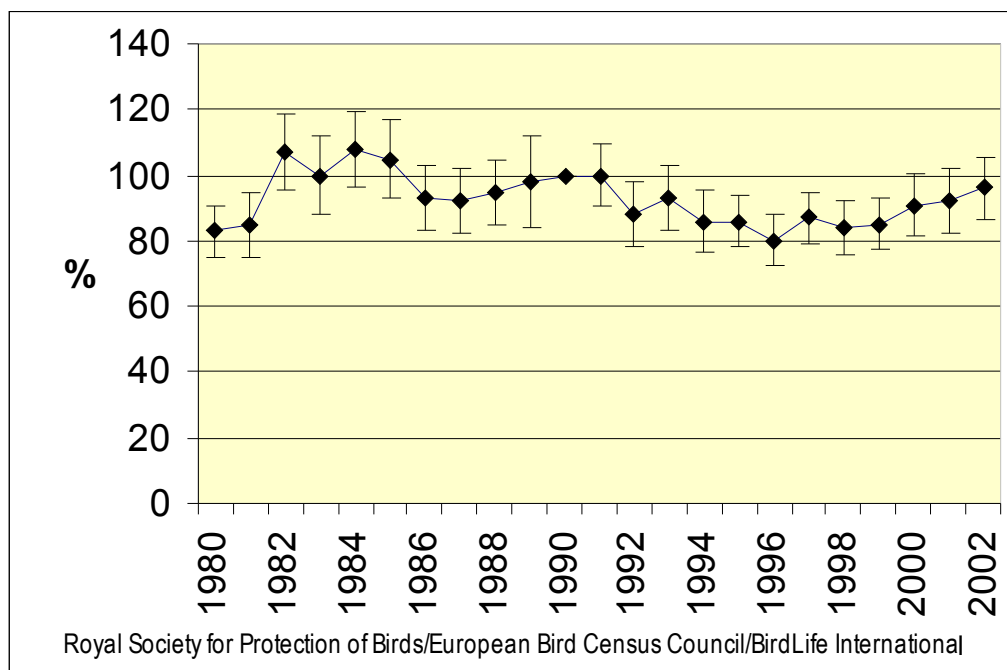


*Carduelis chloris*  
European Greenfinch

Trend in Europe (1966-2002) (SE): 0.99 (0.0016)

Change 1980-2002 (%): +15.7

*Indices (+/- 1.96 SE), 1980 – 2002, Europe. The index for the base year (1990) is 100 %.*



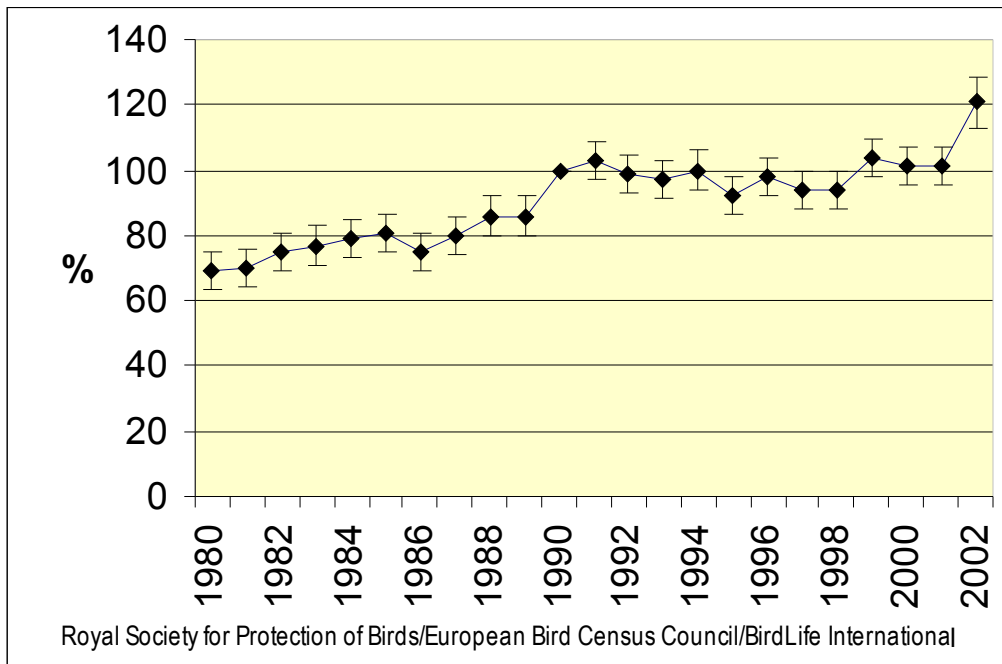


*Columba palumbus*  
Common Wood-pigeon

Trend in Europe (1966-2002) (SE): 1,02 (0.0039)

Change 1980-2002 (%): +75,4

*Indices (+/- 1.96 SE), 1980 – 2002, Europe. The index for the base year (1990) is 100 %.*

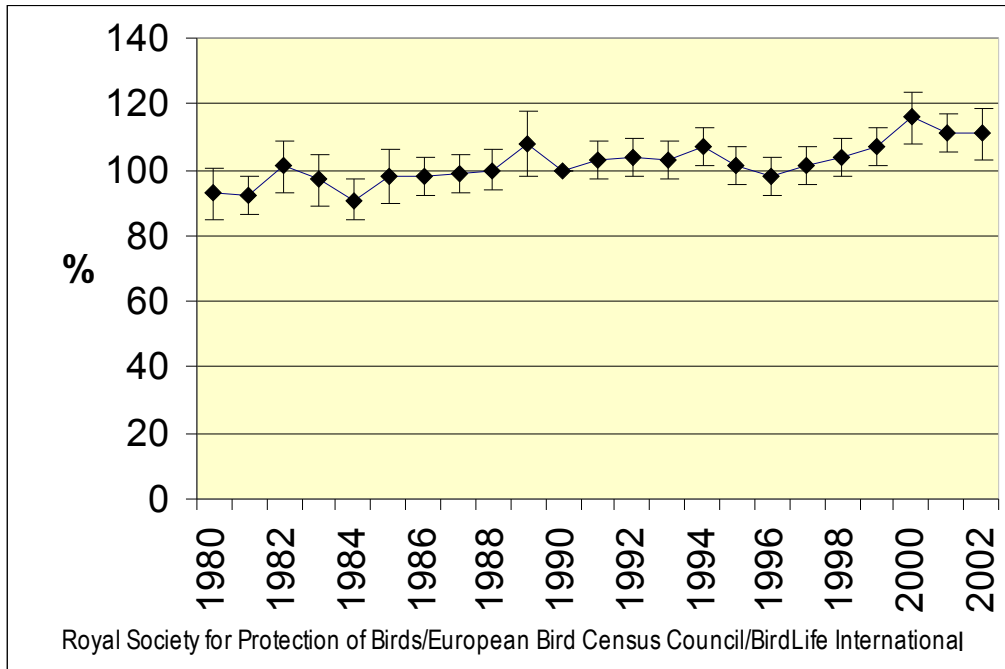


*Corvus corone (corone & cornix)*  
Carrion Crow

Trend in Europe (1966-2002) (SE): 1.01 (0.0014)

Change 1980-2002 (%): +19.4

*Indices (+/- 1.96 SE), 1980 – 2002, Europe. The index for the base year (1990) is 100 %.*

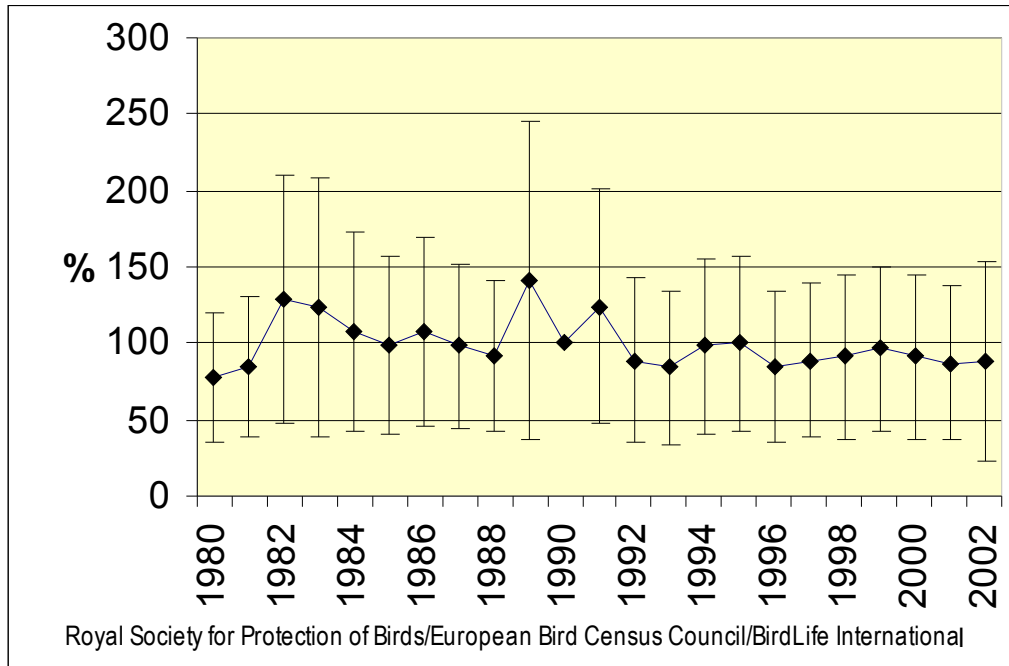


*Corvus monedula*  
Eurasian Jackdaw

**Trend in Europe (1966-2002) (SE): 1.01 (0.0033)**

**Change 1980-2002 (%): +12.8**

*Indices (+/- 1.96 SE), 1980 – 2002, Europe. The index for the base year (1990) is 100 %.*

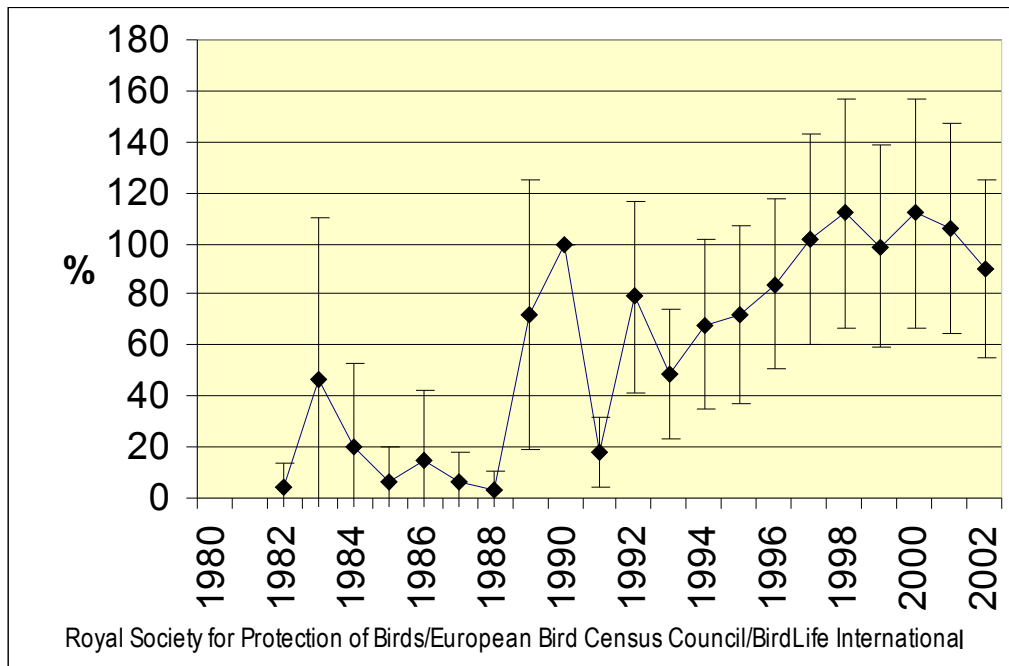


*Coturnix coturnix*  
Quail

Trend in Europe (1966-2002) (SE): 1.15 (0.0484)

Change 1980-2002 (%):

*Indices (+/- 1.96 SE), 1980 – 2002, Europe. The index for the base year (1990) is 100 %.*



**Comments**

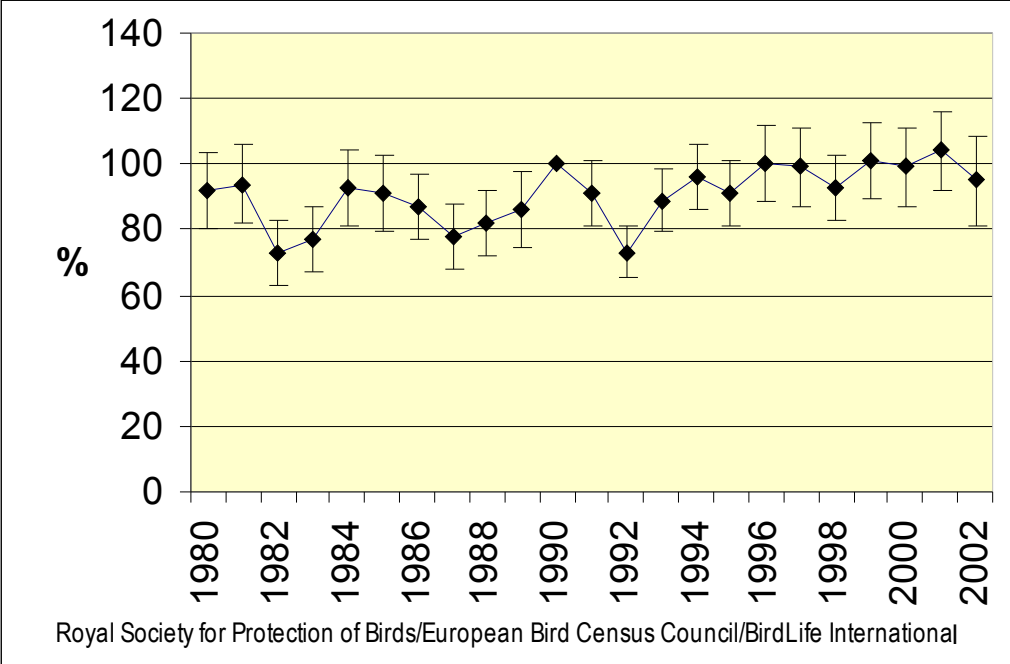
Time series incomplete due to lack of data in some countries.

*Dendrocopos major*  
Great Spotted Woodpecker

**Trend in Europe (1966-2002) (SE): 1.02 (0.0027)**

**Change 1980-2002 (%): +3.3**

*Indices (+/- 1.96 SE), 1980 – 2002, Europe. The index for the base year (1990) is 100 %.*

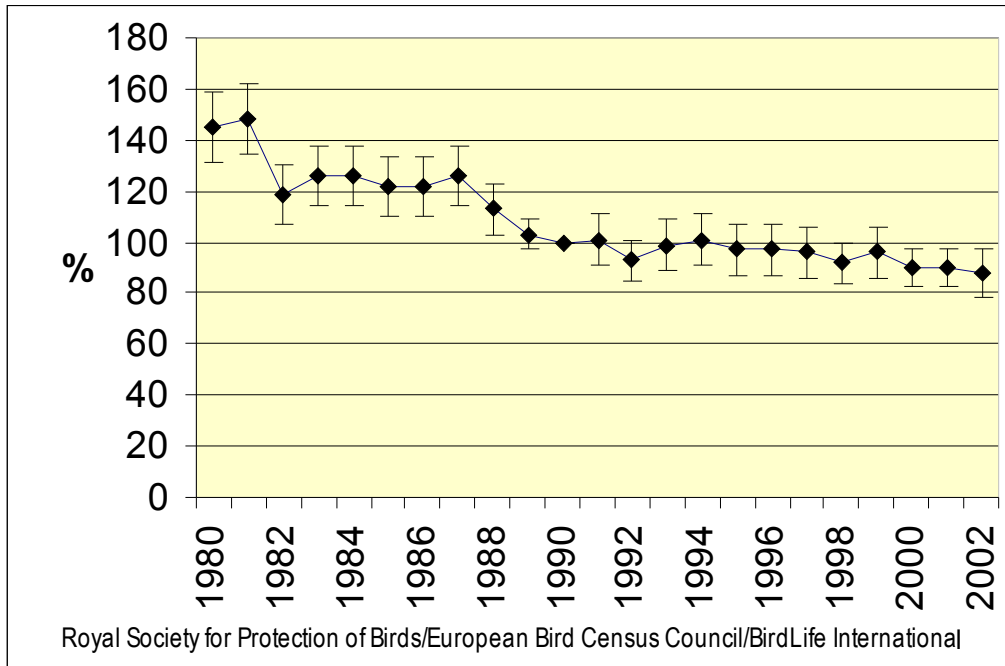


*Emberiza citrinella*  
Yellowhammer

Trend in Europe (1966-2002) (SE): 0.98 (0.0013)

Change 1980-2002 (%): -39.3

*Indices (+/- 1.96 SE), 1980 – 2002, Europe. The index for the base year (1990) is 100 %.*

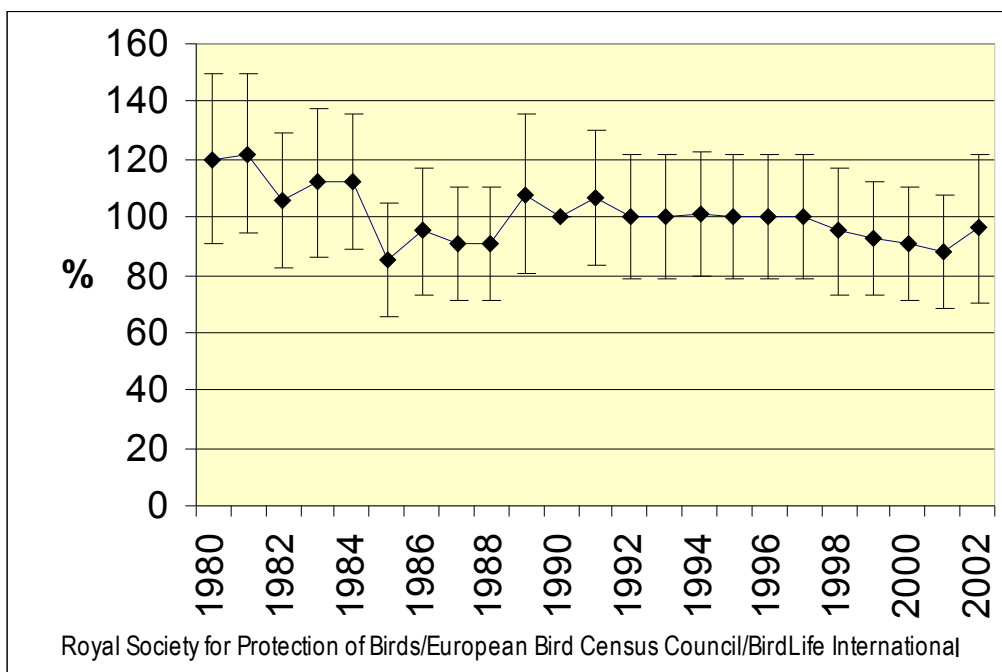


*Emberiza schoeniclus*  
Reed Bunting

Trend in Europe (1966-2002) (SE): 0.98 (0.0019)

Change 1980-2002 (%): -20

*Indices (+/- 1.96 SE), 1980 – 2002, Europe. The index for the base year (1990) is 100 %.*

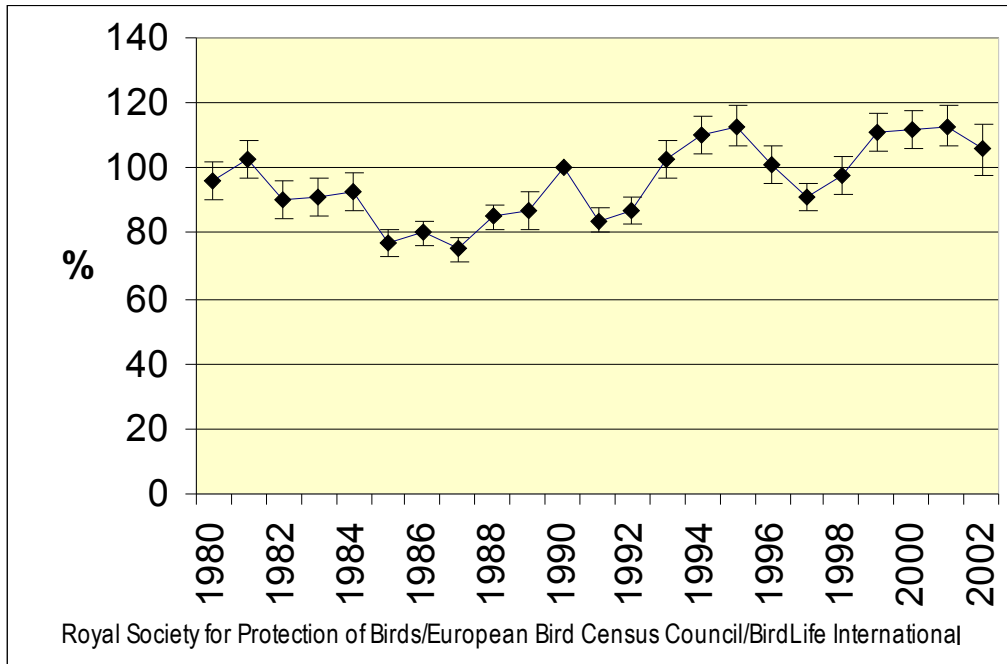


*Erithacus rubecula*  
European Robin

Trend in Europe (1966-2002) (SE): 1 (0.0008)

Change 1980-2002 (%): +10.4

*Indices (+/- 1.96 SE), 1980 – 2002, Europe. The index for the base year (1990) is 100 %.*

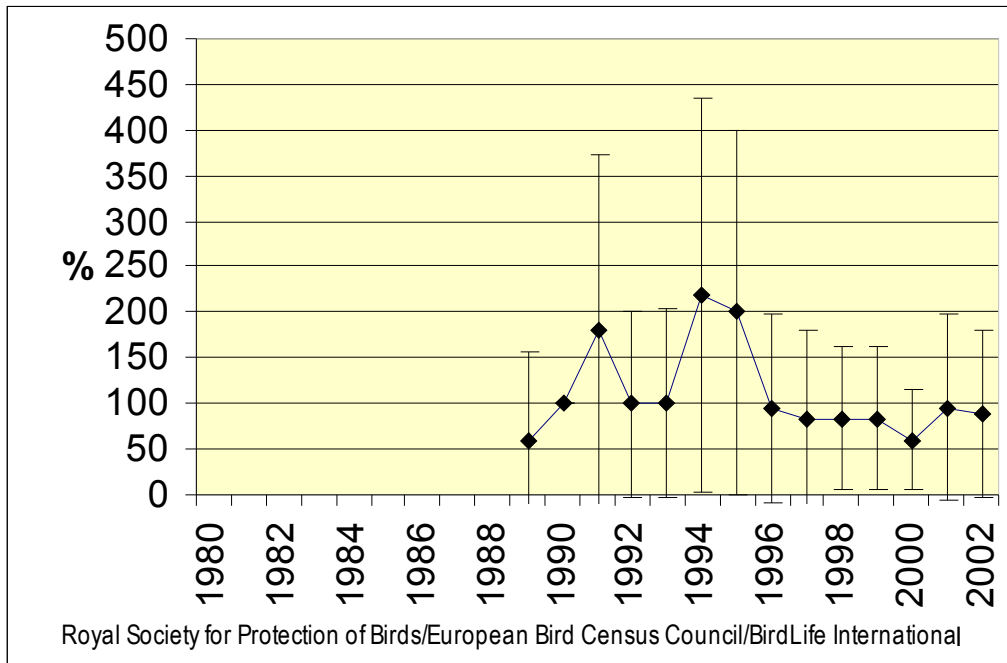




*Falco subbuteo*  
Hobby

Trend in Europe (1966-2002) (SE): 0.97 (0.0323)

Indices (+/- 1.96 SE), 1980 – 2002, Europe. The index for the base year (1990) is 100 %.



**Comments**

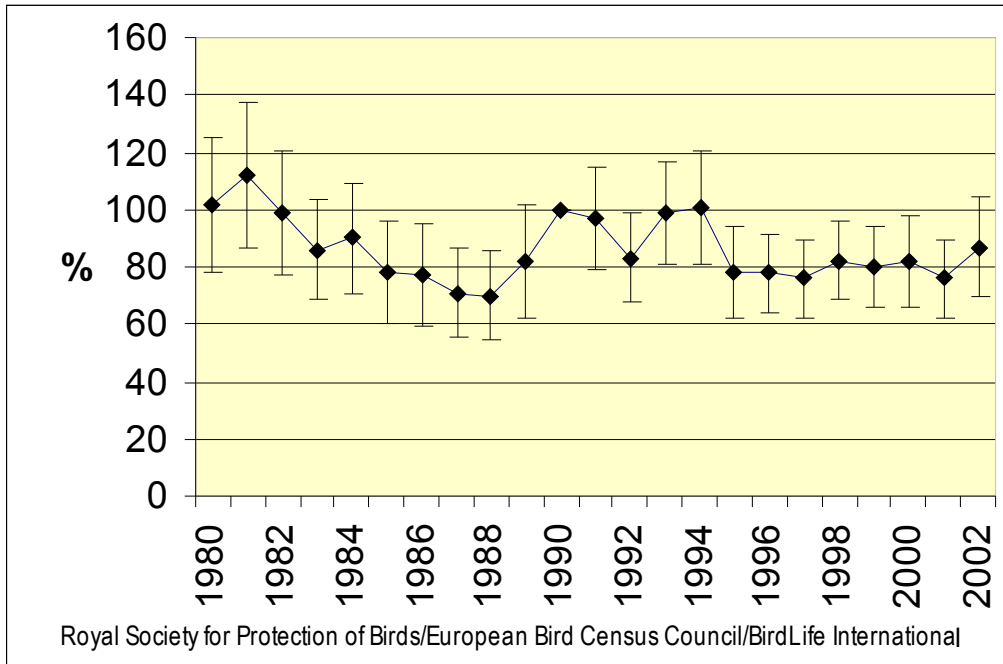
Time series incomplete due to sparse or lack of data in many countries.

*Falco tinnunculus*  
Common Kestrel

Trend in Europe (1966-2002) (SE): 0.99 (0.0035)

Change 1980-2002 (%): -14.7

Indices (+/- 1.96 SE), 1980 – 2002, Europe. The index for the base year (1990) is 100 %.

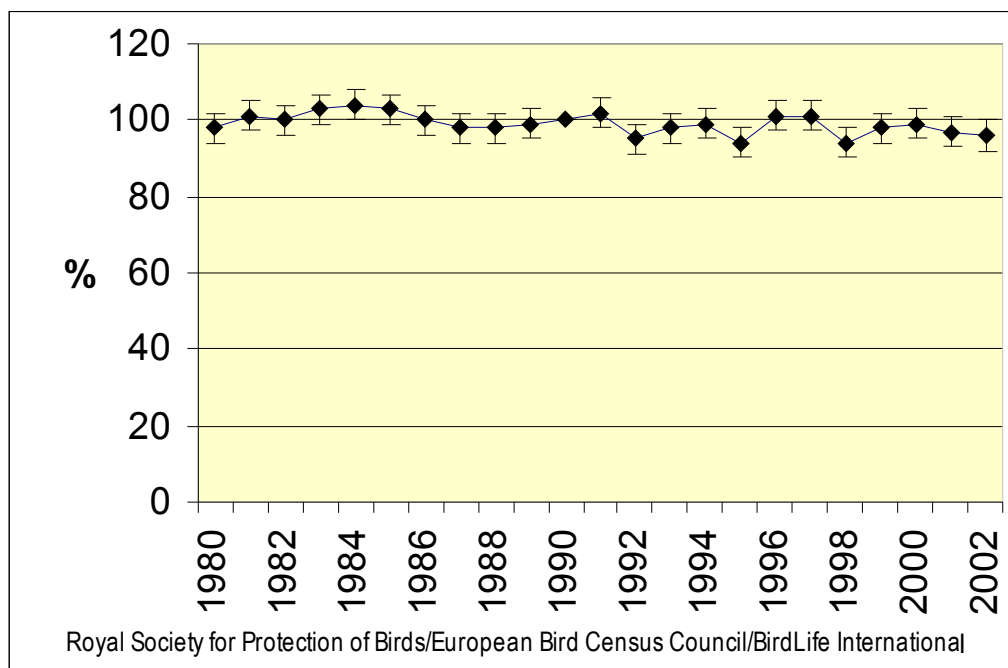


*Fringilla coelebs*  
Chaffinch

Trend in Europe (1966-2002) (SE): 1 (0.0008)

Change 1980-2002 (%): -2

*Indices (+/- 1.96 SE), 1980 – 2002, Europe. The index for the base year (1990) is 100 %.*

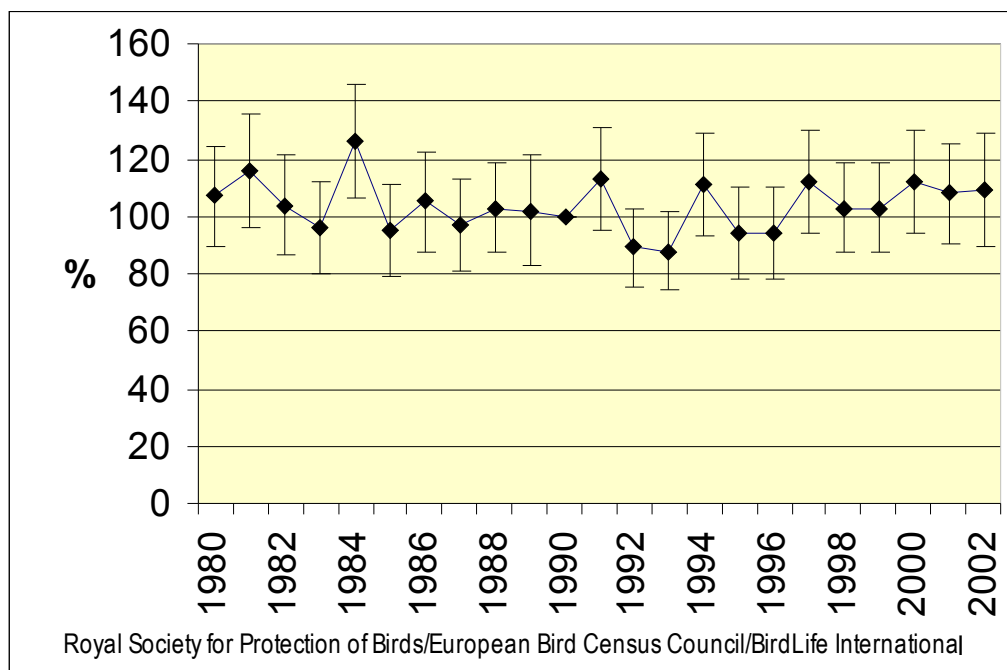


*Garrulus glandarius*  
Eurasian Jay

Trend in Europe (1966-2002) (SE): 0.99 (0.002)

Change 1980-2002 (%): +1.9

*Indices (+/- 1.96 SE), 1980 – 2002, Europe. The index for the base year (1990) is 100 %.*

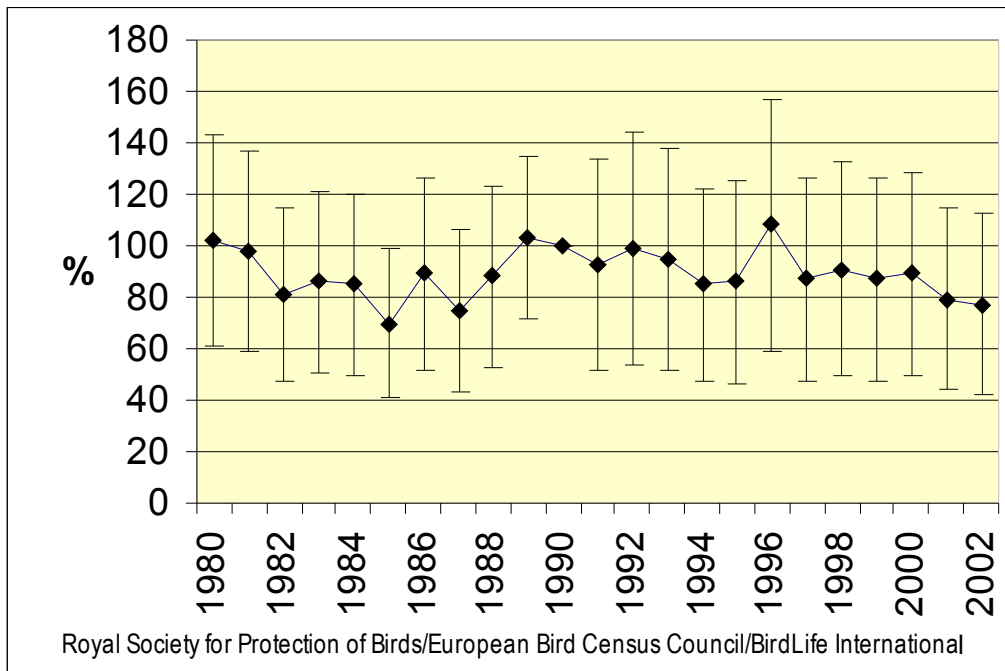


*Hirundo rustica*  
Barn Swallow

Trend in Europe (1966-2002) (SE): 0.99 (0.0024)

Change 1980-2002 (%): -24.5

Indices (+/- 1.96 SE), 1980 – 2002, Europe. The index for the base year (1990) is 100 %.

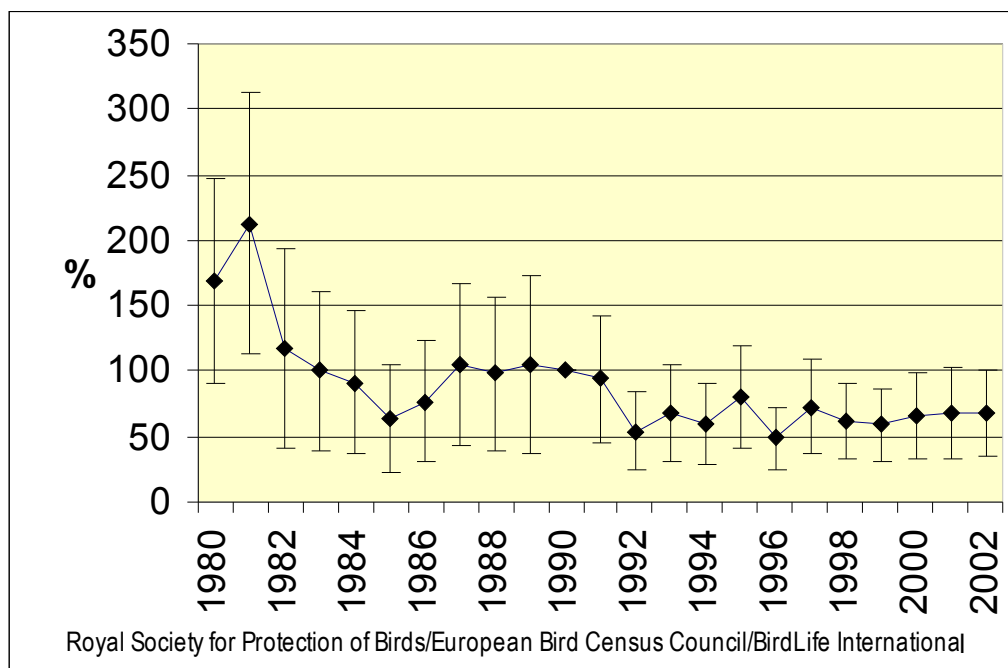


*Jynx torquilla*  
Eurasian Wryneck

Trend in Europe (1966-2002) (SE): 0.96 (0.0062)

Change 1980-2002 (%): -59.5

*Indices (+/- 1.96 SE), 1980 – 2002, Europe. The index for the base year (1990) is 100 %.*

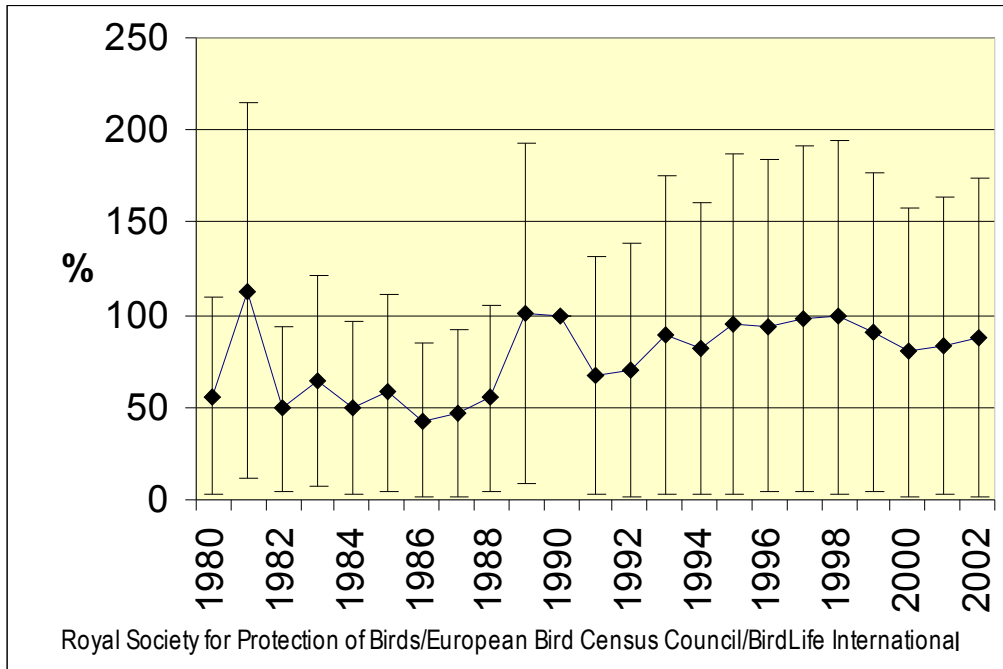


*Lanius collurio*  
Red-backed Shrike

Trend in Europe (1966-2002) (SE): 0.99 (0.0055)

Change 1980-2002 (%): +57.1

*Indices (+/- 1.96 SE), 1980 – 2002, Europe. The index for the base year (1990) is 100 %.*

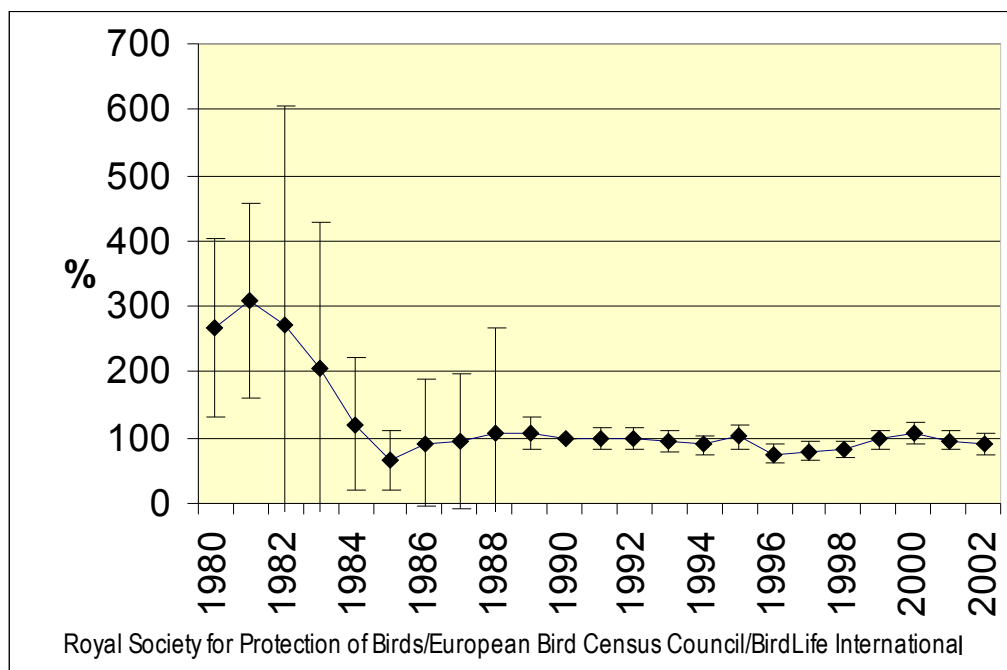


*Miliaria calandra*  
Corn Bunting

Trend in Europe (1966-2002) (SE): 0.94 (0.0085)

Change 1980-2002 (%): -66.2

Indices (+/- 1.96 SE), 1980 – 2002, Europe. The index for the base year (1990) is 100 %.



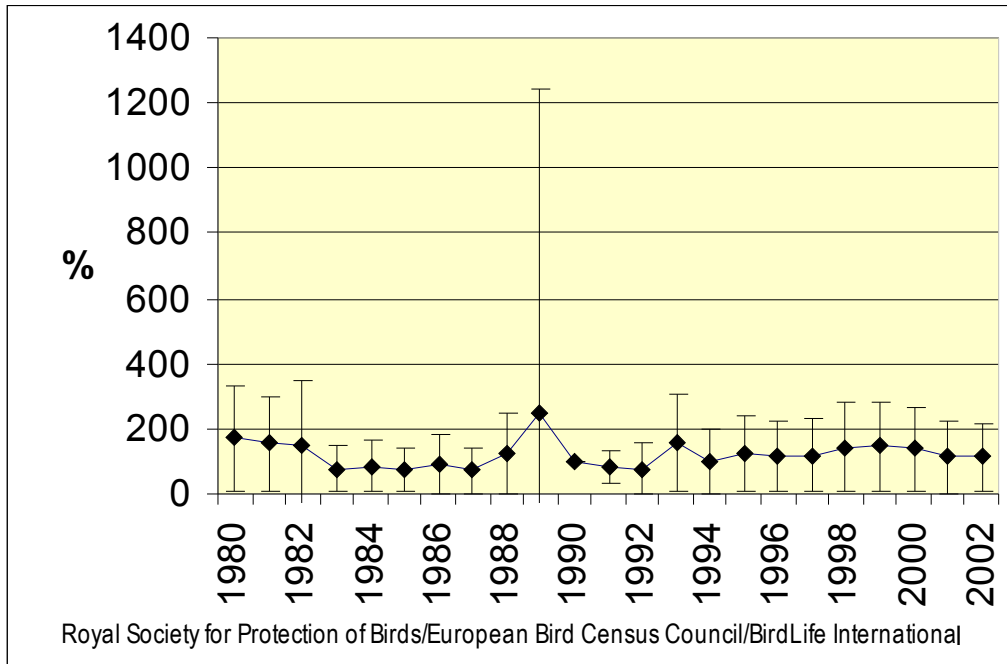


*Motacilla flava*  
Yellow Wagtail

Trend in Europe (1966-2002) (SE): 0.98 (0.01)

Change 1980-2002 (%): -34.1

*Indices (+/- 1.96 SE), 1980 – 2002, Europe. The index for the base year (1990) is 100 %.*

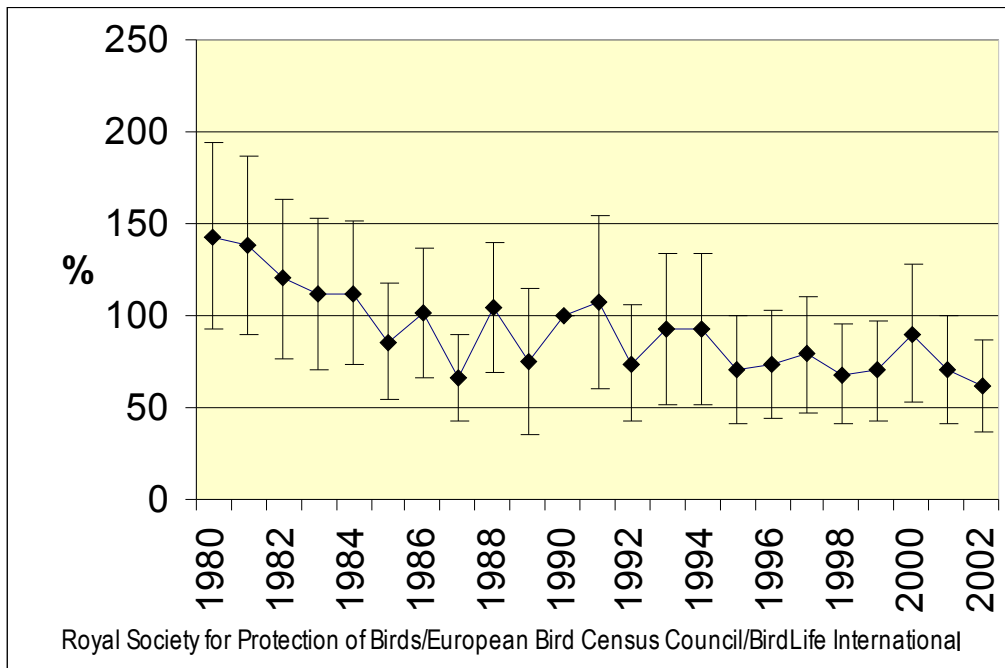


*Muscicapa striata*  
Spotted Flycatcher

Trend in Europe (1966-2002) (SE): 0.96 (0.0028)

Change 1980-2002 (%): -56.6

*Indices (+/- 1.96 SE), 1980 – 2002, Europe. The index for the base year (1990) is 100 %.*

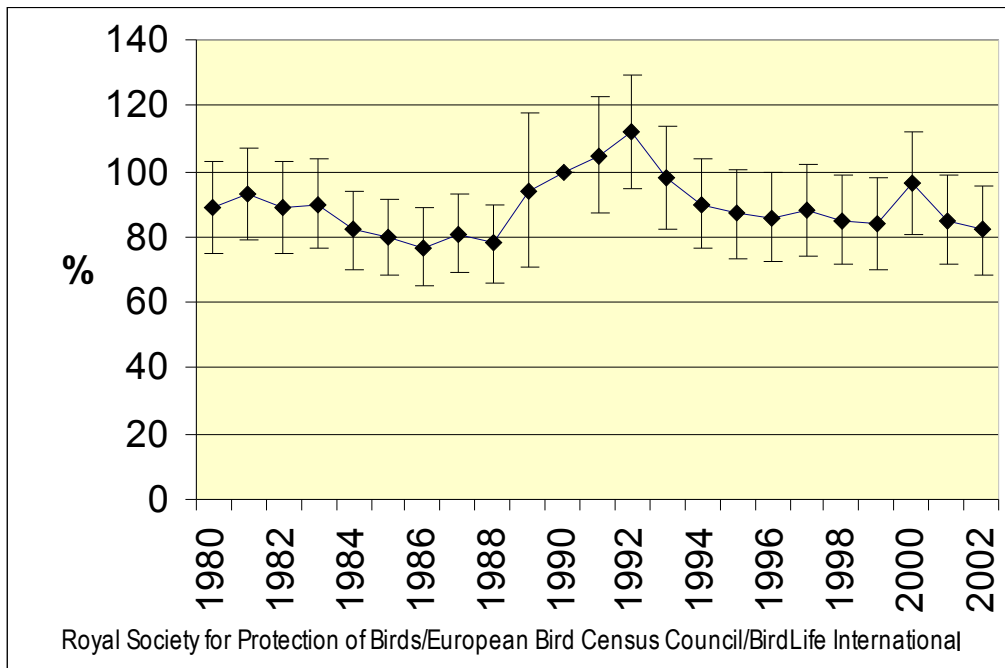


*Parus ater*  
Coal Tit

Trend in Europe (1966-2002) (SE): 1 (0.002)

Change 1980-2002 (%): -7.9

*Indices (+/- 1.96 SE), 1980 – 2002, Europe. The index for the base year (1990) is 100 %.*

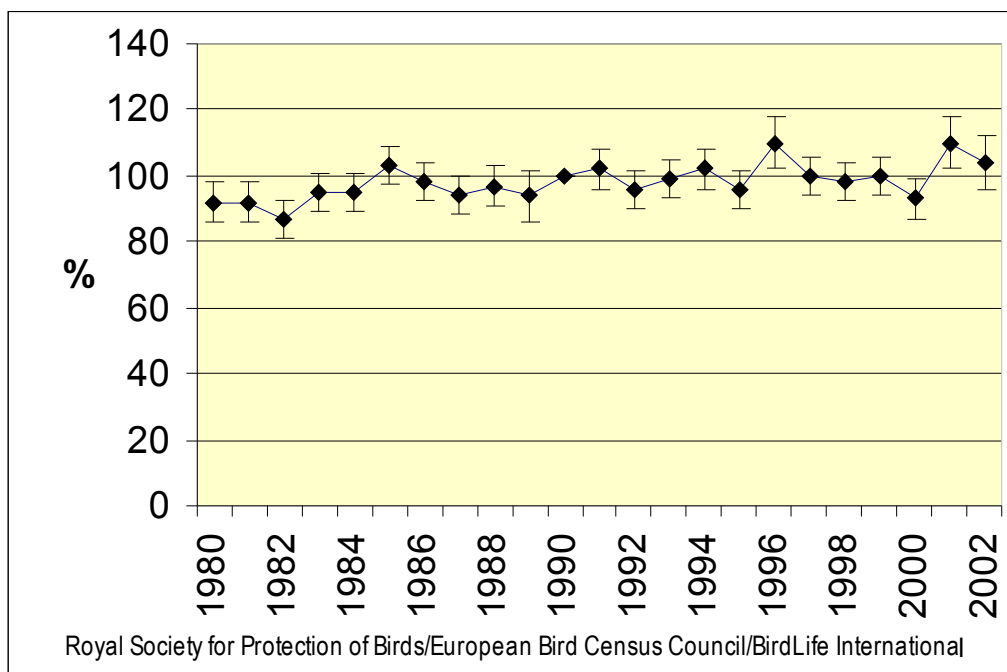


*Parus caeruleus*  
Blue Tit

Trend in Europe (1966-2002) (SE): 1 (0.0008)

Change 1980-2002 (%): +13

*Indices (+/- 1.96 SE), 1980 – 2002, Europe. The index for the base year (1990) is 100 %.*

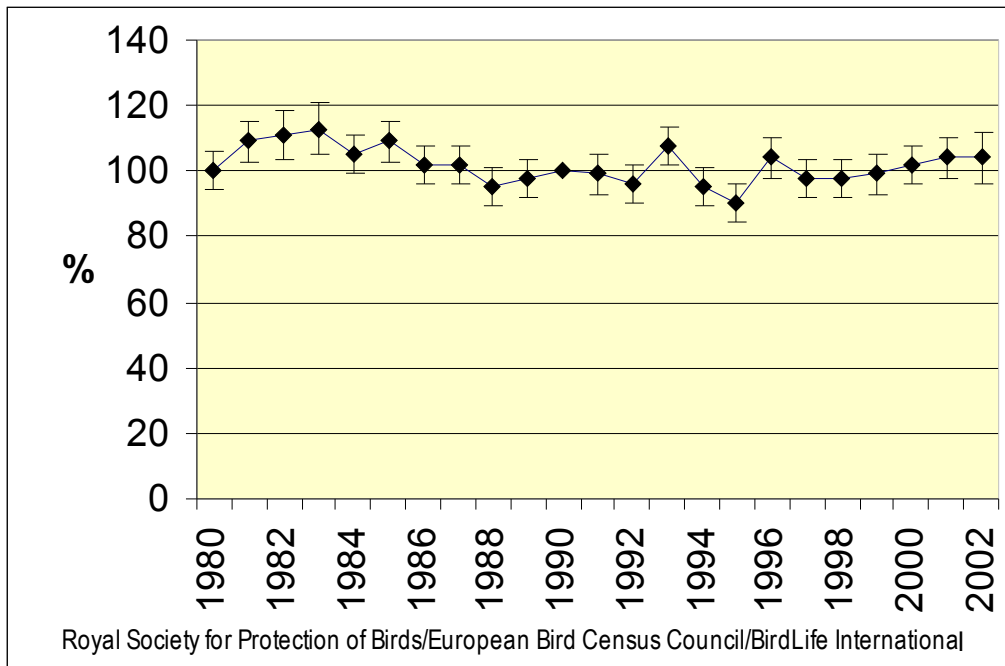


*Parus major*  
Great Tit

Trend in Europe (1966-2002) (SE): 1 (0.0009)

Change 1980-2002 (%): +4

*Indices (+/- 1.96 SE), 1980 – 2002, Europe. The index for the base year (1990) is 100 %.*

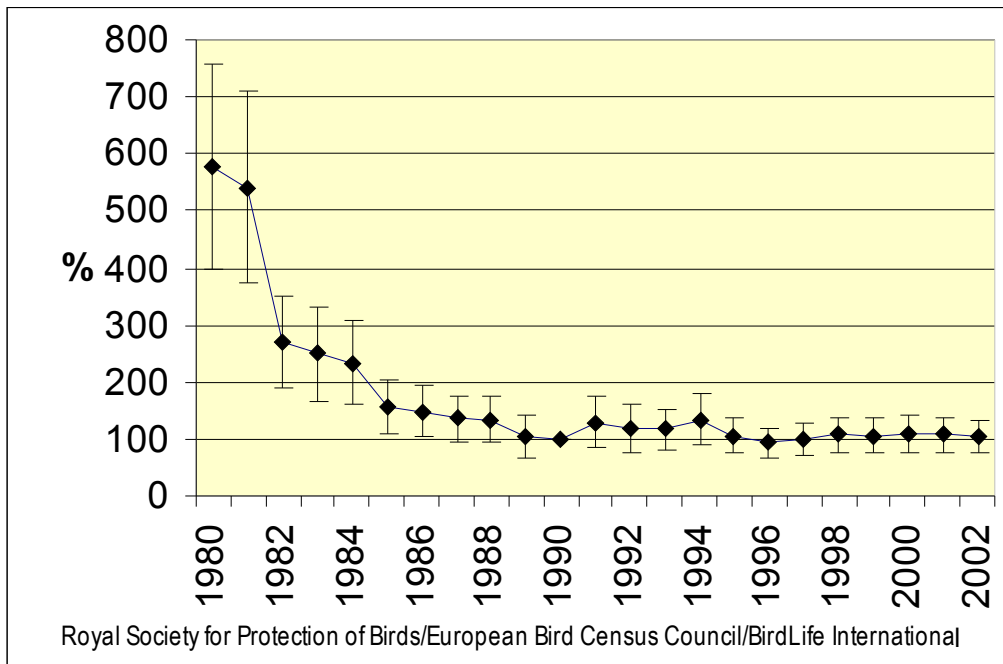


*Passer montanus*  
Eurasian Tree Sparrow

Trend in Europe (1966-2002) (SE): 0.91 (0.0036)

Change 1980-2002 (%): -82.1

*Indices (+/- 1.96 SE), 1980 – 2002, Europe. The index for the base year (1990) is 100 %.*

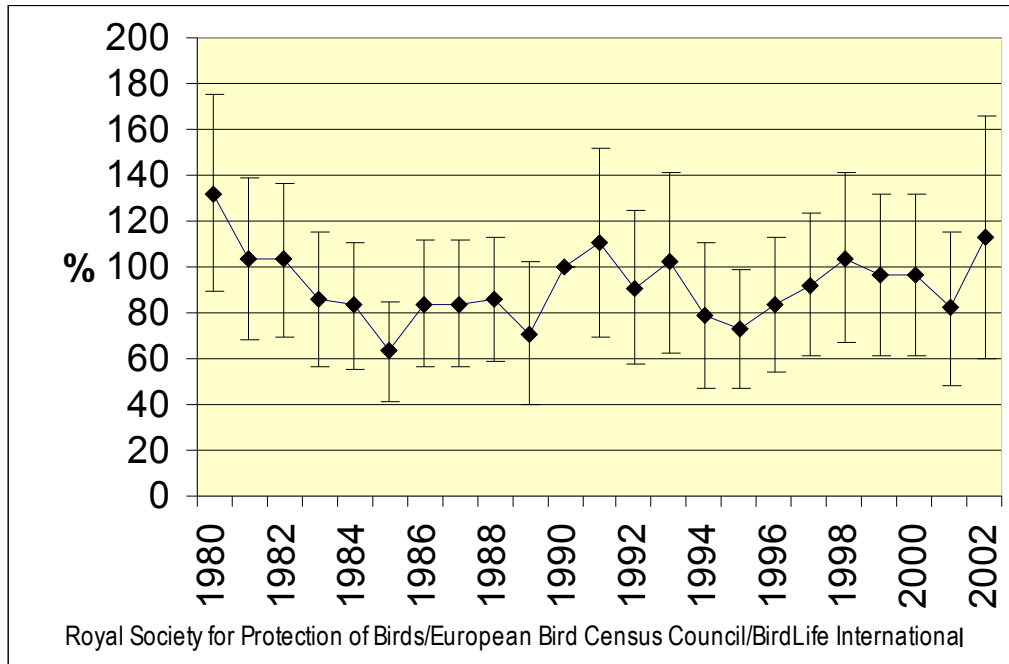


*Phoenicurus phoenicurus*  
Common Redstart

Trend in Europe (1966-2002) (SE): 0.99 (0.0039)

Change 1980-2002 (%): -14.4

*Indices (+/- 1.96 SE), 1980 – 2002, Europe. The index for the base year (1990) is 100 %.*

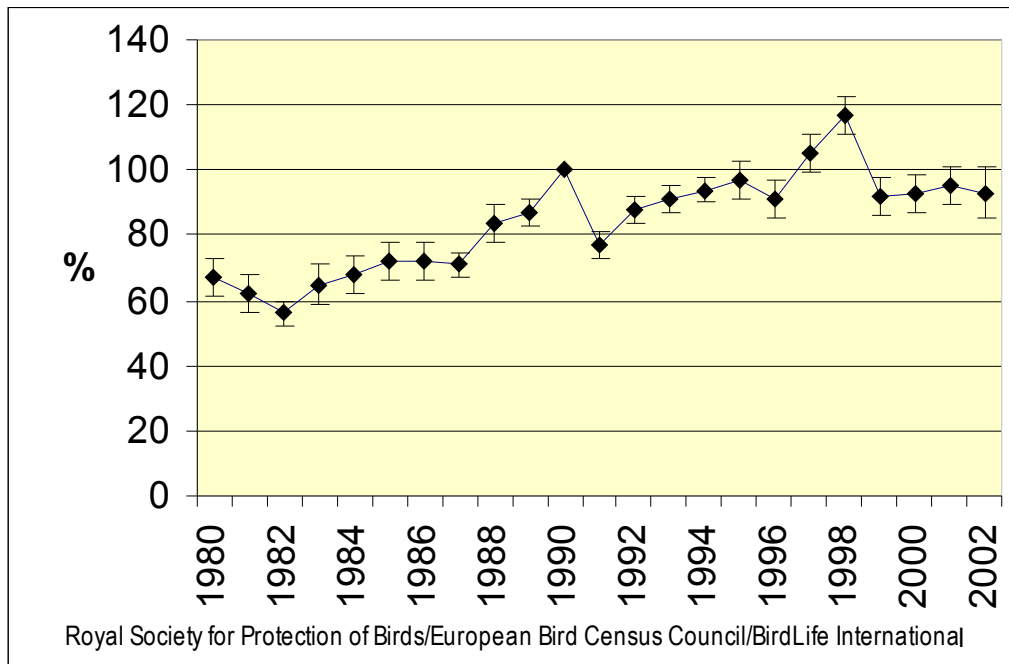


*Phylloscopus collybita*  
Common Chiffchaff

Trend in Europe (1966-2002) (SE): 1 (0.0018)

Change 1980-2002 (%): +38.8

*Indices (+/- 1.96 SE), 1980 – 2002, Europe. The index for the base year (1990) is 100 %.*



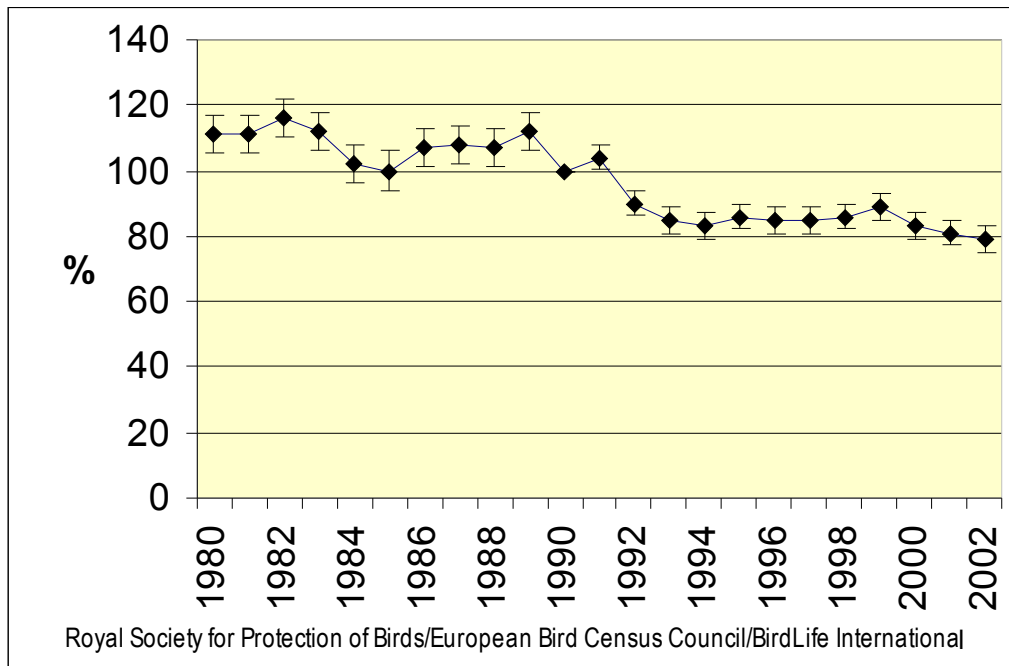


*Phylloscopus trochilus*  
Willow Warbler

Trend in Europe (1966-2002) (SE): 0.98 (0.001)

Change 1980-2002 (%): -28.8

*Indices (+/- 1.96 SE), 1980 – 2002, Europe. The index for the base year (1990) is 100 %.*

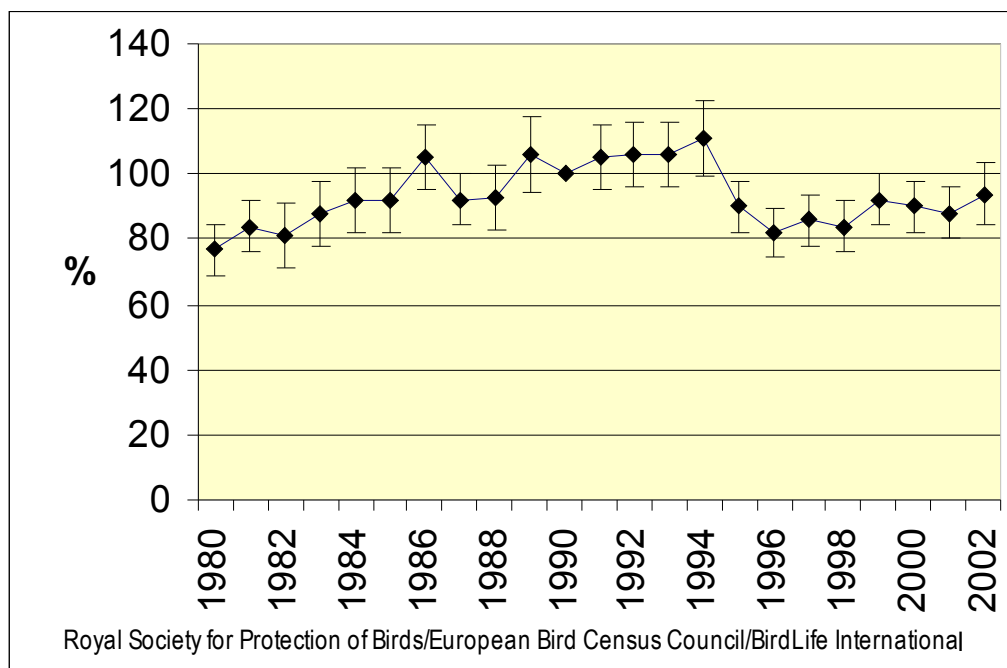


*Pica pica*  
Black-billed Magpie

Trend in Europe (1966-2002) (SE): 1.02 (0.0015)

Change 1980-2002 (%): +22.1

*Indices (+/- 1.96 SE), 1980 – 2002, Europe. The index for the base year (1990) is 100 %.*

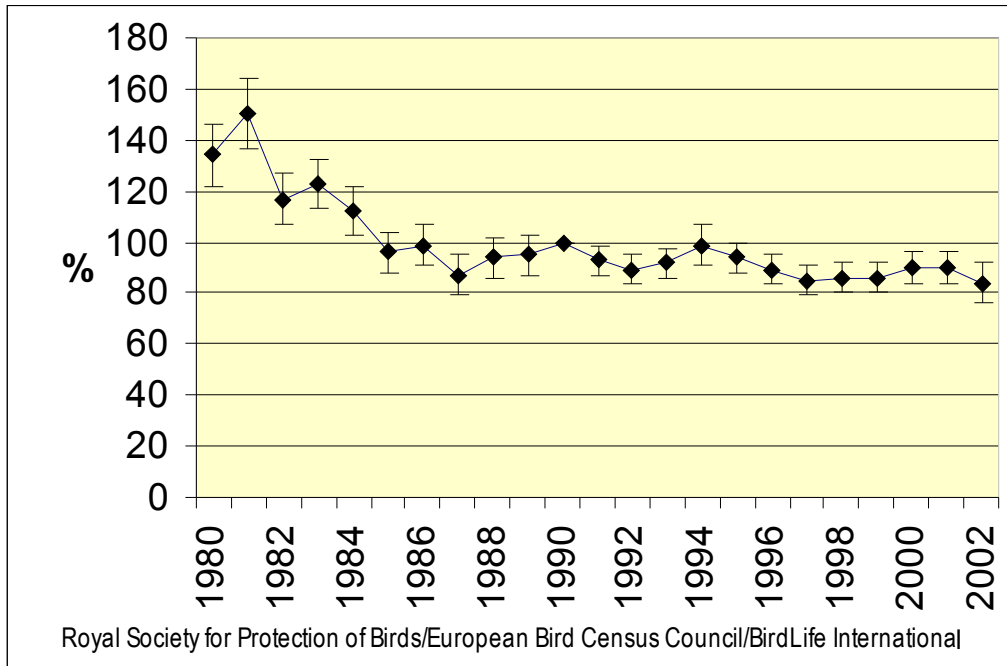


*Prunella modularis*  
Hedge Accentor

Trend in Europe (1966-2002) (SE): 0.97 (0.001)

Change 1980-2002 (%): -37.3

*Indices (+/- 1.96 SE), 1980 – 2002, Europe. The index for the base year (1990) is 100 %.*

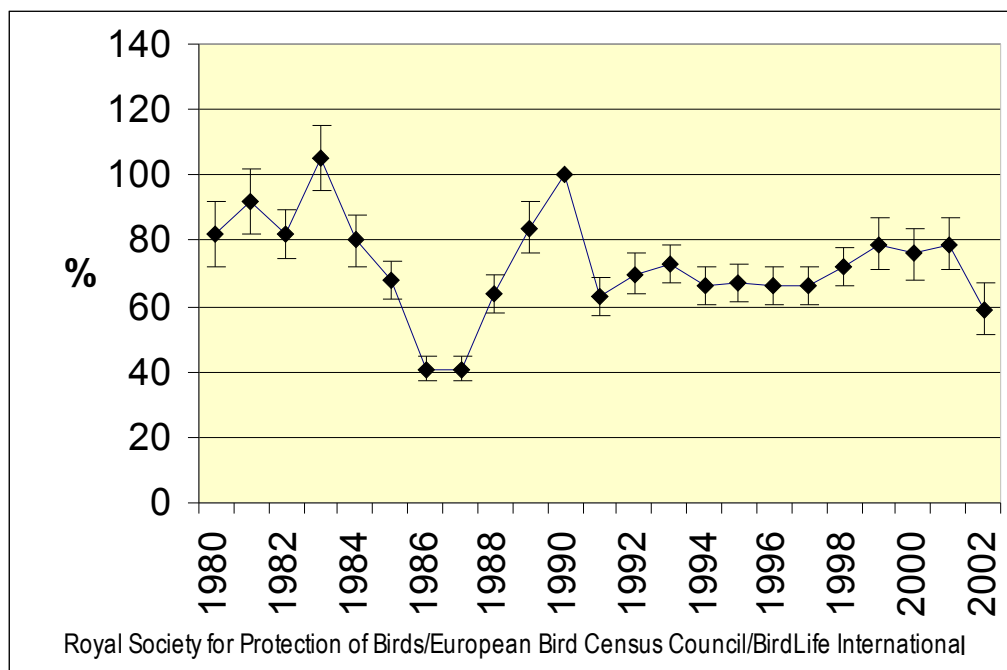


*Regulus regulus*  
Goldcrest

Trend in Europe (1966-2002) (SE): 0.99 (0.0024)

Change 1980-2002 (%): -28

*Indices (+/- 1.96 SE), 1980 – 2002, Europe. The index for the base year (1990) is 100 %.*

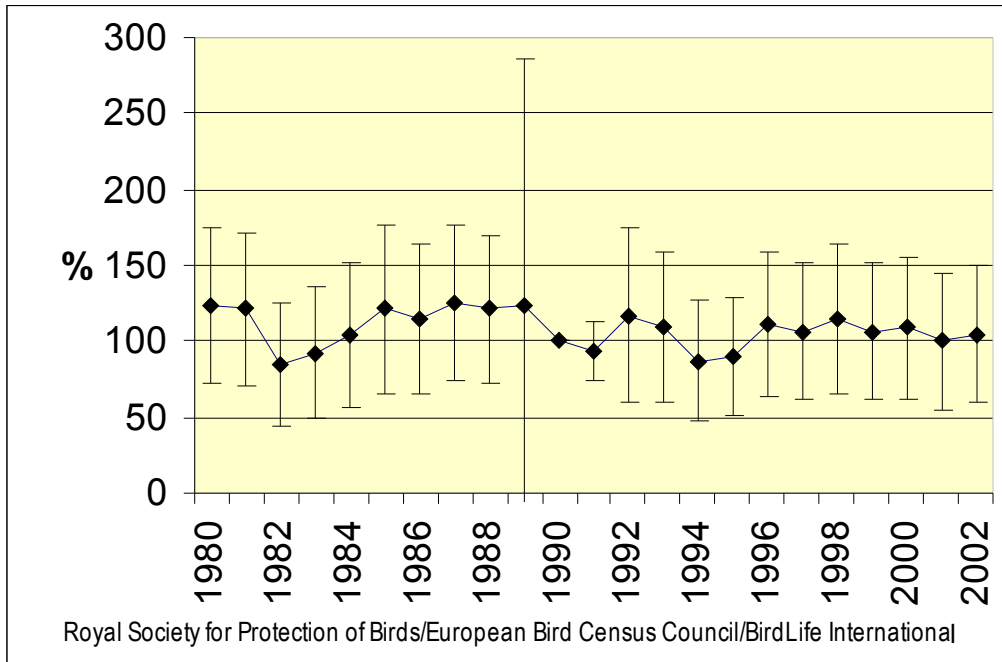


*Saxicola rubetra*  
Whinchat

Trend in Europe (1966-2002) (SE): 0.99 (0.0047)

Change 1980-2002 (%): -14.6

*Indices (+/- 1.96 SE), 1980 – 2002, Europe. The index for the base year (1990) is 100 %.*

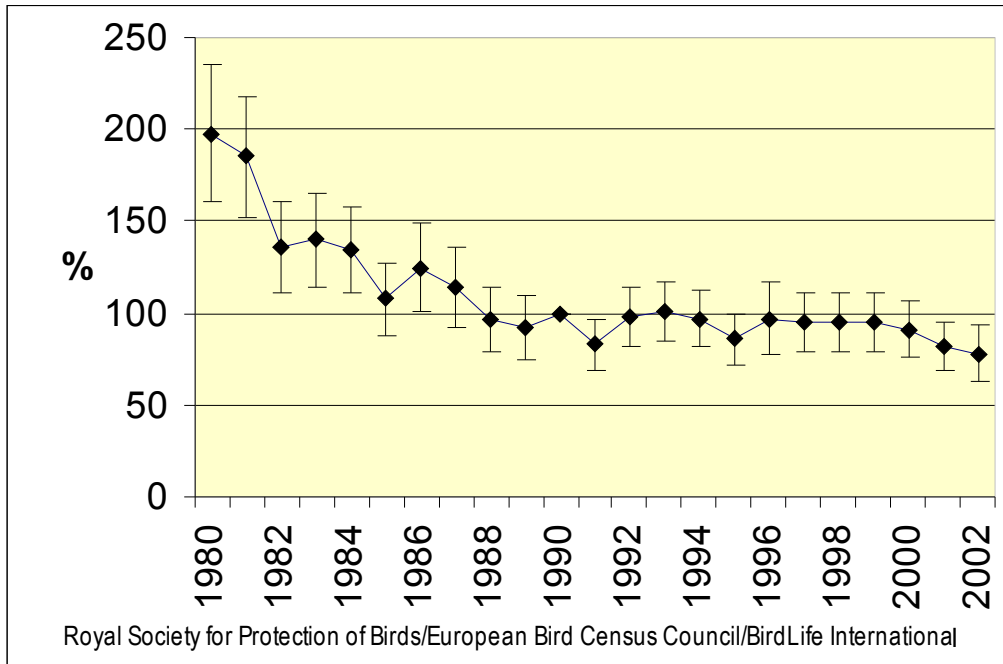


*Streptopelia turtur*  
European Turtle-dove

Trend in Europe (1966-2002) (SE): 0.96 (0.0028)

Change 1980-2002 (%): -60.6

*Indices (+/- 1.96 SE), 1980 – 2002, Europe. The index for the base year (1990) is 100 %.*

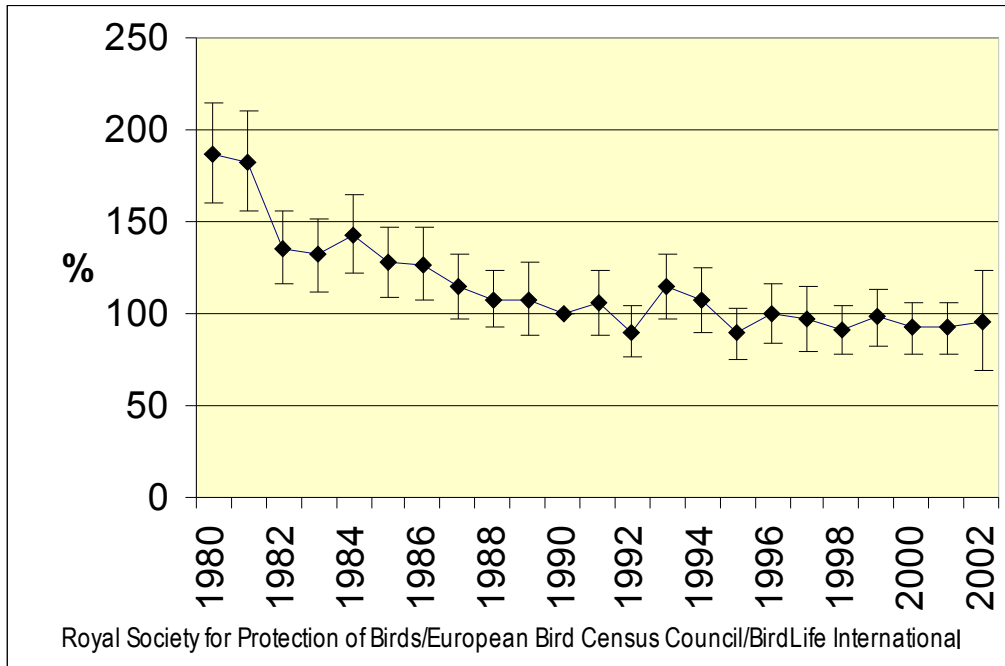


*Sturnus vulgaris*  
Common Starling

Trend in Europe (1966-2002) (SE): 0.96 (0.0018)

Change 1980-2002 (%): -48.7

Indices (+/- 1.96 SE), 1980 – 2002, Europe. The index for the base year (1990) is 100 %.

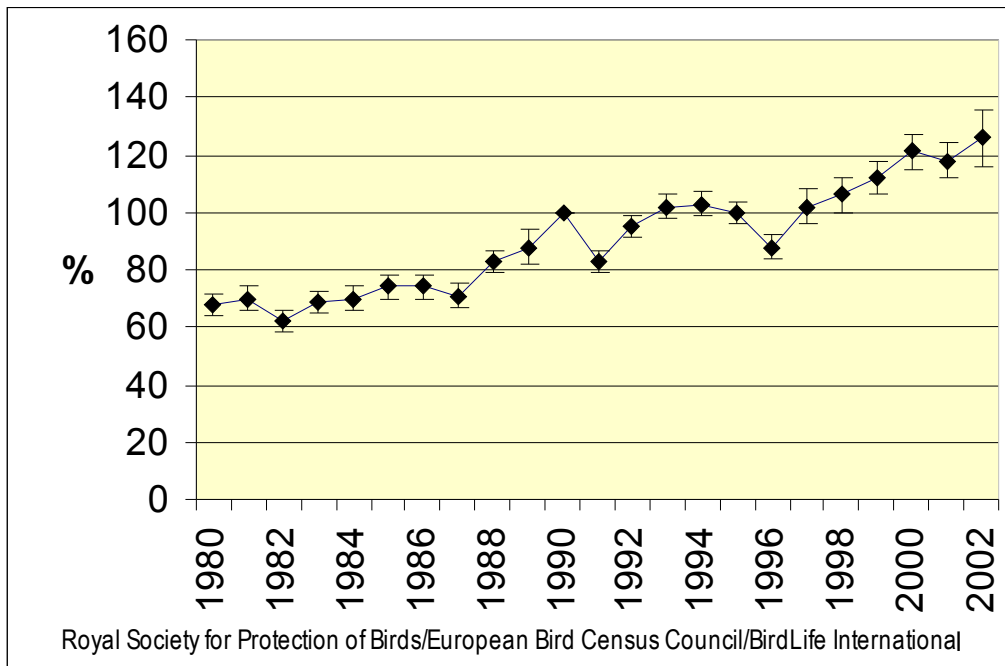


*Sylvia atricapilla*  
Blackcap

Trend in Europe (1966-2002) (SE): 1.02 (0.0015)

Change 1980-2002 (%): +85.3

*Indices (+/- 1.96 SE), 1980 – 2002, Europe. The index for the base year (1990) is 100 %.*



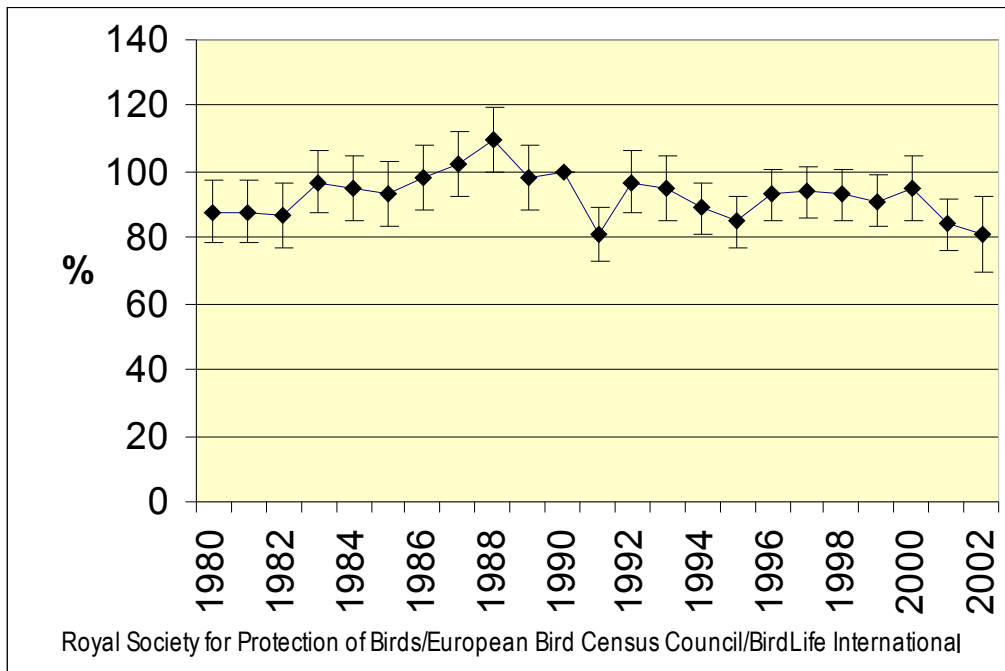


*Sylvia borin*  
Garden Warbler

Trend in Europe (1966-2002) (SE): 1 (0.0025)

Change 1980-2002 (%): -8

*Indices (+/- 1.96 SE), 1980 – 2002, Europe. The index for the base year (1990) is 100 %.*

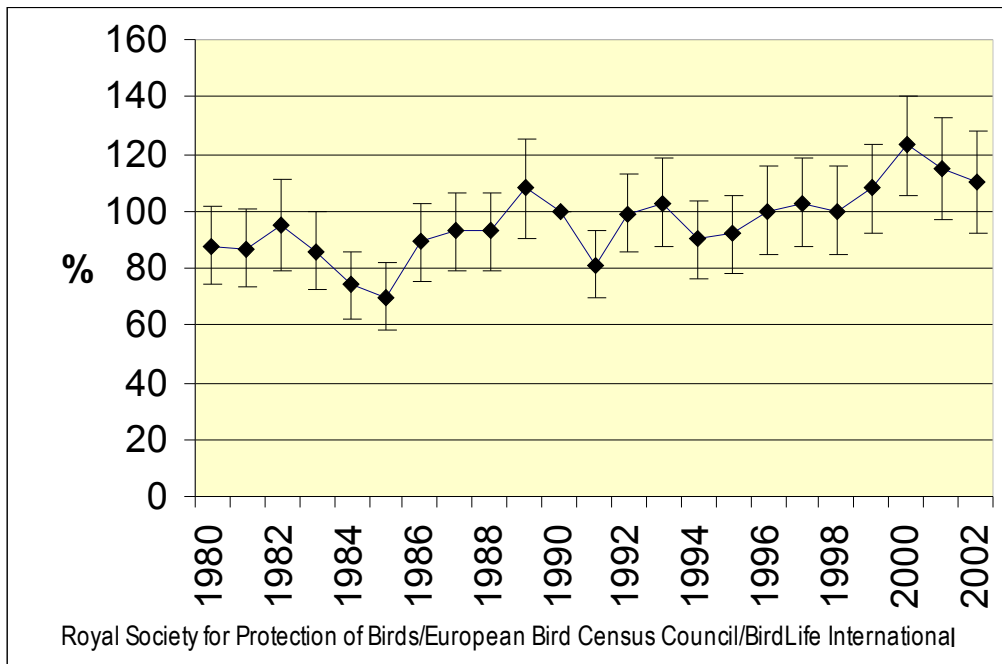


*Sylvia communis*  
Common Whitethroat

Trend in Europe (1966-2002) (SE): 0.98 (0.0019)

Change 1980-2002 (%): +25

*Indices (+/- 1.96 SE), 1980 – 2002, Europe. The index for the base year (1990) is 100 %.*

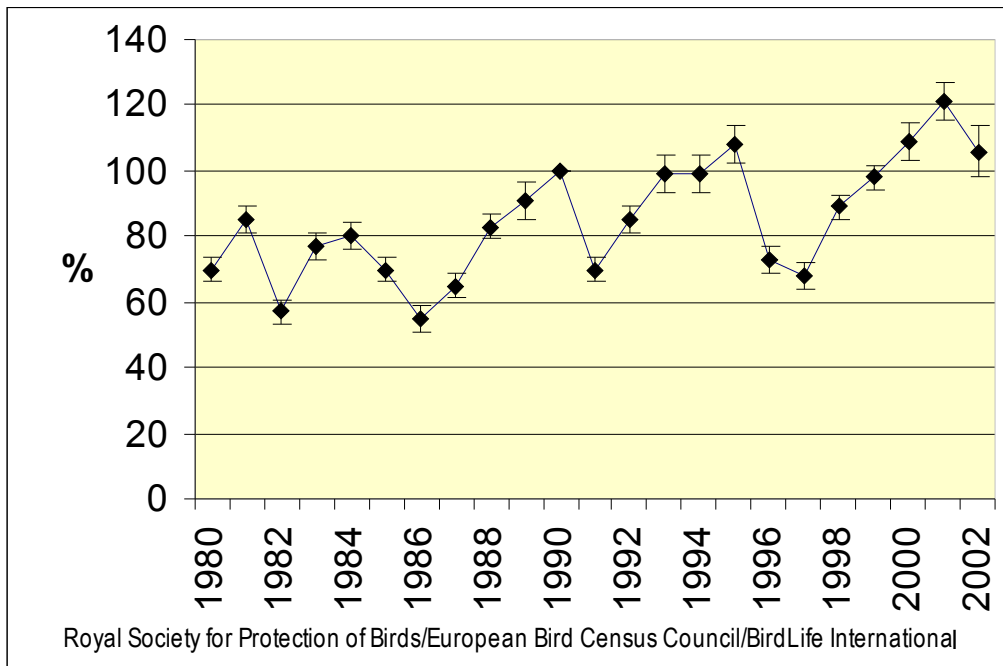


*Troglodytes troglodytes*  
Winter Wren

Trend in Europe (1966-2002) (SE): 1.01 (0.0009)

Change 1980-2002 (%): +51.4

*Indices (+/- 1.96 SE), 1980 – 2002, Europe. The index for the base year (1990) is 100 %.*

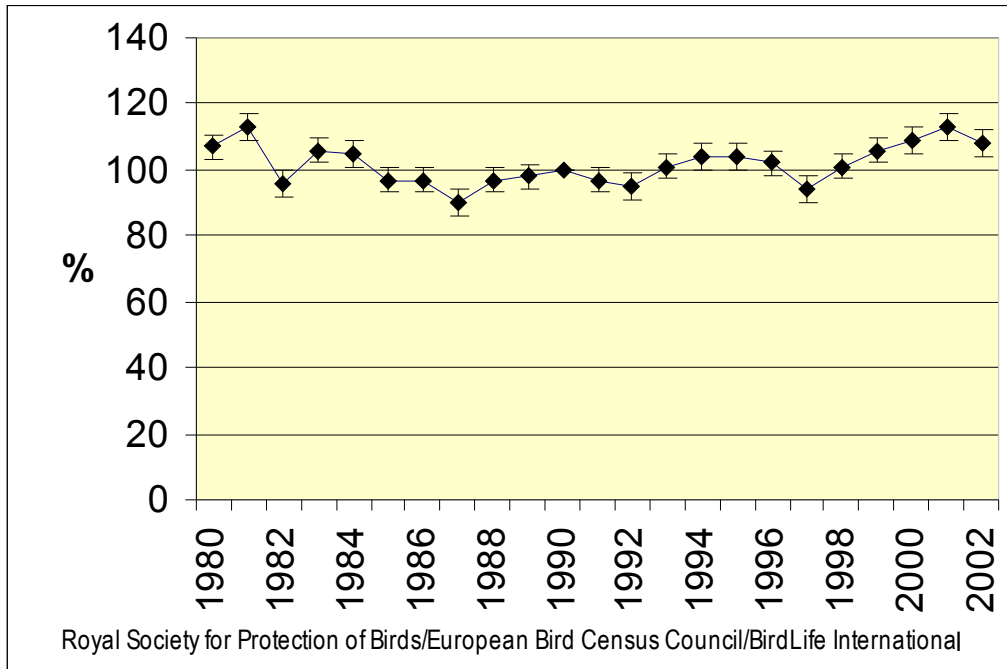


*Turdus merula*  
Eurasian Blackbird

Trend in Europe (1966-2002) (SE): 0.99 (0.0007)

Change 1980-2002 (%): +0.9

*Indices (+/- 1.96 SE), 1980 – 2002, Europe. The index for the base year (1990) is 100 %.*

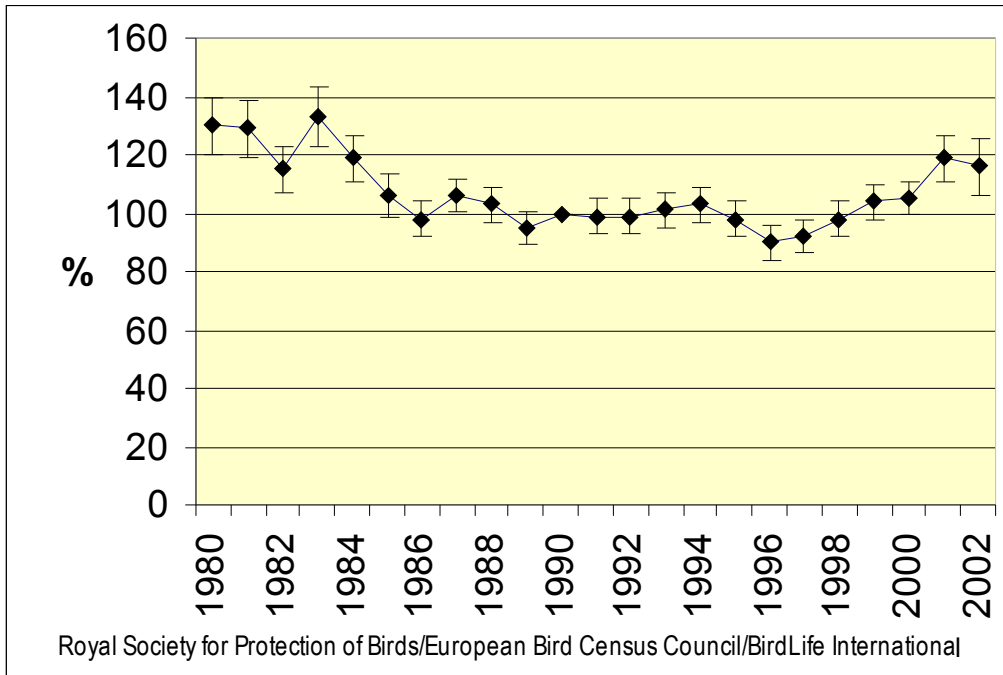


*Turdus philomelos*  
Song Thrush

Trend in Europe (1966-2002) (SE): 0.97 (0.001)

Change 1980-2002 (%): -10.8

*Indices (+/- 1.96 SE), 1980 – 2002, Europe. The index for the base year (1990) is 100 %.*

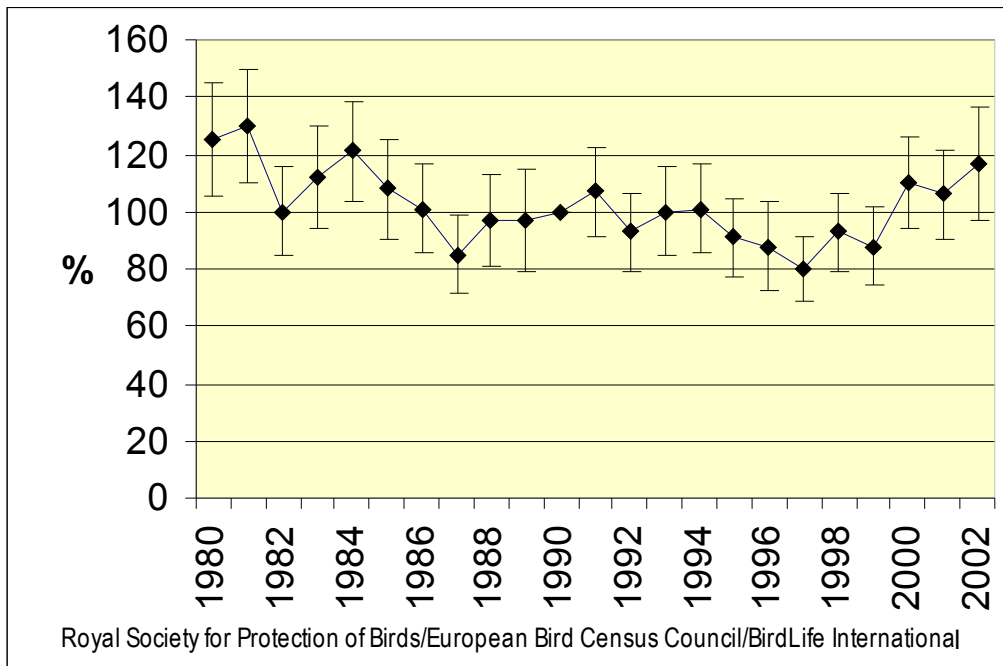


*Turdus viscivorus*  
Mistle Thrush

Trend in Europe (1966-2002) (SE): 0.98 (0.0018)

Change 1980-2002 (%): -6.4

*Indices (+/- 1.96 SE), 1980 – 2002, Europe. The index for the base year (1990) is 100 %.*



*Vanellus vanellus*  
Northern Lapwing

Trend in Europe (1966-2002) (SE): 0.97 (0.0036)

Change 1980-2002 (%): -63.5

*Indices (+/- 1.96 SE), 1980 – 2002, Europe. The index for the base year (1990) is 100 %.*

